

## Anti-YTHDF3 antibody (1-275) (STJ110693)

STJ110693

### GENERAL INFORMATION

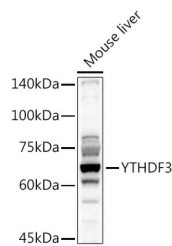
|                          |                                                                                                                                                       |
|--------------------------|-------------------------------------------------------------------------------------------------------------------------------------------------------|
| <b>Product Type</b>      | Primary antibodies                                                                                                                                    |
| <b>Short Description</b> | Rabbit polyclonal antibody anti-YTHDF3 (1-275) is suitable for use in Western Blot, Immunohistochemistry, Immunofluorescence and Immunoprecipitation. |
| <b>Applications</b>      | WB, IHC, IF, IP                                                                                                                                       |
| <b>Host/Source</b>       | Rabbit                                                                                                                                                |
| <b>Reactivity</b>        | Human, Mouse, Rat                                                                                                                                     |

### PRODUCT PROPERTIES

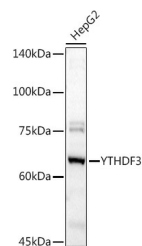
|                       |                                                                     |
|-----------------------|---------------------------------------------------------------------|
| <b>Clonality</b>      | Polyclonal                                                          |
| <b>Clone ID</b>       |                                                                     |
| <b>Concentration</b>  |                                                                     |
| <b>Conjugation</b>    | Unconjugated                                                        |
| <b>Purification</b>   | Affinity purification                                               |
| <b>Dilution Range</b> | WB 1:500-1:2000<br>IHC 1:50-1:100<br>IF 1:50-1:200<br>IP 1:50-1:200 |
| <b>Formulation</b>    | PBS containing 0.02% Sodium Azide, 50% Glycerol, pH7.3.             |
| <b>Isotype</b>        | IgG                                                                 |
| <b>Storage</b>        | Store in a freezer at -20°C and avoid freeze-thaw cycles.           |
| <b>Instruction</b>    |                                                                     |

### TARGET INFORMATION

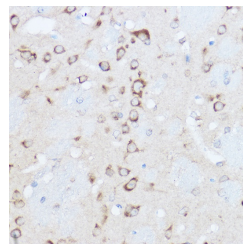
|                           |                                                                                                                    |
|---------------------------|--------------------------------------------------------------------------------------------------------------------|
| <b>Gene ID</b>            | 253943                                                                                                             |
| <b>Gene Symbol</b>        | YTHDF3                                                                                                             |
| <b>Uniprot ID</b>         | YTHD3_HUMAN                                                                                                        |
| <b>Immunogen</b>          | Recombinant fusion protein containing a sequence corresponding to amino acids 1-275 of human YTHDF3 (NP_689971.4). |
| <b>Immunogen Region</b>   | 1-275                                                                                                              |
| <b>Specificity</b>        |                                                                                                                    |
| <b>Immunogen Sequence</b> |                                                                                                                    |



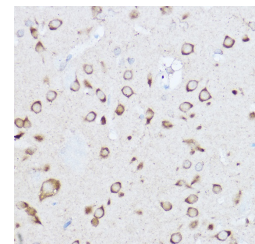
Western blot analysis of extracts of mouse liver, using YTHDF3 antibody (STJ110693) at 1:1000 dilution. Secondary antibody: HRP Goat Anti-rabbit IgG (H+L) at 1:10000 dilution. Lysates/proteins: 25ug per lane. Blocking buffer: 3% nonfat dry milk in TBST. Detection: ECL Basic Kit. Exposure time: 90s.



Western blot analysis of extracts of HepG2 cells, using YTHDF3 antibody (STJ110693) at 1:1000 dilution. Secondary antibody: HRP Goat Anti-rabbit IgG (H+L) at 1:10000 dilution. Lysates/proteins: 25ug per lane. Blocking buffer: 3% nonfat dry milk in TBST. Detection: ECL Basic Kit. Exposure time: 90s.



Immunohistochemistry of paraffin-embedded mouse brain using YTHDF3 rabbit polyclonal antibody (STJ110693) at dilution of 1:500 (40x lens). Perform high pressure antigen retrieval with 10 mM citrate buffer pH 6.0 before commencing with immunohistochemistry staining protocol.



Immunohistochemistry of paraffin-embedded rat brain using YTHDF3 rabbit polyclonal antibody (STJ110693) at dilution of 1:500 (40x lens). Perform high pressure antigen retrieval with 10 mM citrate buffer pH 6.0 before commencing with immunohistochemistry staining protocol.

This product is suitable for in-vitro studies under the RESEARCH USE ONLY [RUO] licence. This product must not be used as for diagnostic or other medical purposes.

St John's Laboratory Ltd, Knowledge Dock Business Centre, University Way, London, E16 2RD | Tel: 0208 223 3081