

Anti-XPC antibody (700-940) (STJ110652)

STJ110652

GENERAL INFORMATION

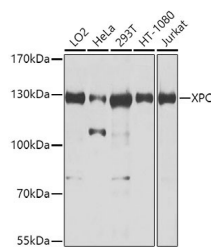
Product Type	Primary antibodies
Short Description	Rabbit polyclonal antibody anti-XPC (700-940) is suitable for use in Western Blot, Immunohistochemistry and Immunoprecipitation.
Applications	WB, IHC, IP
Host/Source	Rabbit
Reactivity	Human

PRODUCT PROPERTIES

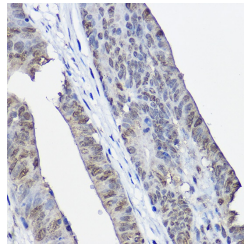
Clonality	Polyclonal
Clone ID	
Concentration	
Conjugation	Unconjugated
Purification	Affinity purification
Dilution Range	WB 1:500-1:2000 IHC 1:50-1:100 IP 1:50-1:100
Formulation	PBS containing 0.02% Sodium Azide, 50% Glycerol, pH7.3.
Isotype	IgG
Storage Instruction	Store in a freezer at -20°C and avoid freeze-thaw cycles.

TARGET INFORMATION

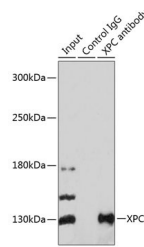
Gene ID	7508
Gene Symbol	XPC
Uniprot ID	XPC_HUMAN
Immunogen	Recombinant fusion protein containing a sequence corresponding to amino acids 700-940 of human XPC (NP_004619.3).
Immunogen Region	700-940
Specificity	
Immunogen Sequence	



Western blot analysis of extracts of various cell lines, using XPC antibody (STJ110652) at 1:1000 dilution. Secondary antibody: HRP Goat Anti-rabbit IgG (H+L) at 1:10000 dilution. Lysates/proteins: 25µg per lane. Blocking buffer: 3% nonfat dry milk in TBST. Detection: ECL Enhanced Kit. Exposure time: 5s.



Immunohistochemistry of paraffin-embedded human colon carcinoma using XPC rabbit polyclonal antibody (STJ110652) at dilution of 1:100 (40x lens).



Immunoprecipitation analysis of 200µg extracts of 293T cells using 3µg XPC antibody (STJ110652). Western blot was performed from the immunoprecipitate using XPC antibody (STJ110652) at a dilution of 1:1000.

This product is suitable for in-vitro studies under the RESEARCH USE ONLY [RUO] licence. This product must not be used as for diagnostic or other medical purposes.
St John's Laboratory Ltd, Knowledge Dock Business Centre, University Way, London, E16 2RD | Tel: 0208 223 3081