

Anti-ATAD3A antibody (1-240) (STJ110529)

STJ110529

GENERAL INFORMATION

Product Type	Primary antibodies
Short Description	Rabbit polyclonal antibody anti-ATAD3A (1-240) is suitable for use in Western Blot and Immunohistochemistry.
Applications	WB, IHC
Host/Source	Rabbit
Reactivity	Human, Mouse

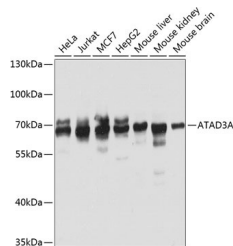
PRODUCT PROPERTIES

Clonality	Polyclonal
Clone ID	
Concentration	
Conjugation	Unconjugated
Purification	Affinity purification
Dilution Range	WB 1:500-1:2000 IHC 1:100-1:200
Formulation	PBS containing 0.02% Sodium Azide, 50% Glycerol, pH7.3.
Isotype	IgG
Storage Instruction	Store in a freezer at -20°C and avoid freeze-thaw cycles.

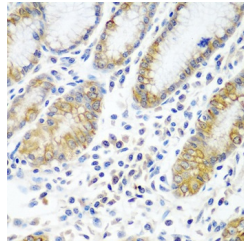
TARGET INFORMATION

Gene ID	55210
Gene Symbol	ATAD3A
Uniprot ID	ATD3A_HUMAN
Immunogen	Recombinant fusion protein containing a sequence corresponding to amino acids 1-240 of human ATAD3A (NP_001164006.1).
Immunogen Region	1-240

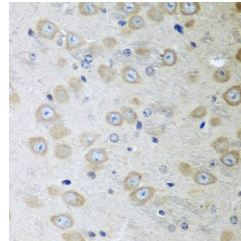
Specificity
Immunogen
Sequence



Western blot analysis of extracts of various cell lines, using ATAD3A antibody (STJ110529) at 1:1000 dilution. Secondary antibody: HRP Goat Anti-rabbit IgG (H+L) at 1:10000 dilution. Lysates/proteins: 25ug per lane. Blocking buffer: 3% nonfat dry milk in TBST. Detection: ECL Basic Kit. Exposure time: 10s.



Immunohistochemistry of paraffin-embedded human stomach using ATAD3A antibody (STJ110529) at dilution of 1:100 (40x lens).



Immunohistochemistry of paraffin-embedded mouse brain using ATAD3A antibody (STJ110529) at dilution of 1:100 (40x lens).