

Anti-Gm13125 antibody (67-274) (STJ110394)

STJ110394

GENERAL INFORMATION

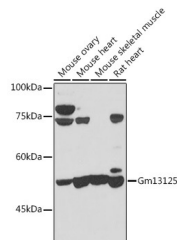
Product Type	Primary antibodies
Short Description	Rabbit polyclonal antibody anti-Gm13125 (67-274) is suitable for use in Western Blot and Immunohistochemistry.
Applications	WB, IHC
Host/Source	Rabbit
Reactivity	Human, Mouse, Rat

PRODUCT PROPERTIES

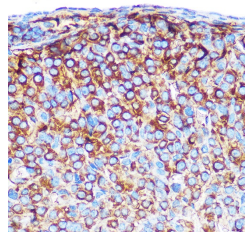
Clonality	Polyclonal
Clone ID	
Concentration	
Conjugation	Unconjugated
Purification	Affinity purification
Dilution Range	WB 1:500-1:2000 IHC 1:100-1:200
Formulation	PBS containing 0.02% Sodium Azide, 50% Glycerol, pH7.3.
Isotype	IgG
Storage Instruction	Store in a freezer at -20°C and avoid freeze-thaw cycles.

TARGET INFORMATION

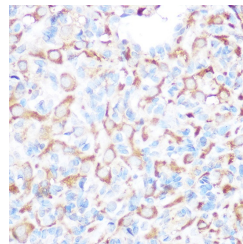
Gene ID	645425
Gene Symbol	PRAMEF20
Uniprot ID	PRA20_HUMAN
Immunogen	Recombinant fusion protein containing a sequence corresponding to amino acids 67-274 of mouse Gm13125 (NP_001108549.1).
Immunogen Region	67-274
Specificity	
Immunogen Sequence	



Western blot analysis of extracts of various cell lines, using Gm13125 antibody (STJ110394) at 1:1000 dilution. Secondary antibody: HRP Goat Anti-rabbit IgG (H+L) at 1:10000 dilution. Lysates/proteins: 25ug per lane. Blocking buffer: 3% nonfat dry milk in TBST. Detection: ECL Basic Kit. Exposure time: 30s.



Immunohistochemistry of paraffin-embedded mouse ovary using Gm13125 rabbit polyclonal antibody (STJ110394) at dilution of 1:100 (40x lens).



Immunohistochemistry of paraffin-embedded rat ovary using Gm13125 rabbit polyclonal antibody (STJ110394) at dilution of 1:100 (40x lens).