

Anti-PRDM7 antibody (210-310) (STJ110268)

STJ110268

GENERAL INFORMATION

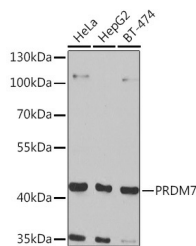
Product Type	Primary antibodies
Short Description	Rabbit polyclonal antibody anti-PRDM7 (210-310) is suitable for use in Western Blot and Immunofluorescence.
Applications	WB, IF
Host/Source	Rabbit
Reactivity	Human

PRODUCT PROPERTIES

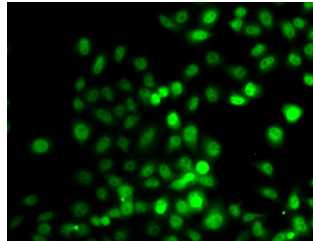
Clonality	Polyclonal
Clone ID	
Concentration	
Conjugation	Unconjugated
Purification	Affinity purification
Dilution Range	WB 1:500-1:2000 IF 1:50-1:100
Formulation	PBS containing 0.02% Sodium Azide, 50% Glycerol, pH7.3.
Isotype	IgG
Storage Instruction	Store in a freezer at -20°C and avoid freeze-thaw cycles.

TARGET INFORMATION

Gene ID	11105
Gene Symbol	PRDM7
Uniprot ID	PRDM7_HUMAN
Immunogen	Recombinant fusion protein containing a sequence corresponding to amino acids 210-310 of human PRDM7 (NP_001091643.1).
Immunogen Region	210-310
Specificity	
Immunogen Sequence	



Western blot analysis of extracts of various cell lines, using PRDM7 rabbit polyclonal antibody (STJ110268) at 1:1000 dilution. Secondary antibody: HRP Goat Anti-rabbit IgG (H+L) at 1:10000 dilution. Lysates/proteins: 25µg per lane. Blocking buffer: 3% nonfat dry milk in TBS-T. Detection: ECL Basic Kit. Exposure time: 30s.



Immunofluorescence analysis of A549 cells using PRDM7 antibody (STJ110268).

This product is suitable for in-vitro studies under the RESEARCH USE ONLY [RUO] licence. This product must not be used as for diagnostic or other medical purposes.
St John's Laboratory Ltd, Knowledge Dock Business Centre, University Way, London, E16 2RD | Tel: 0208 223 3081