

Anti-KIF11 antibody (797-1056) (STJ110216)

STJ110216

GENERAL INFORMATION

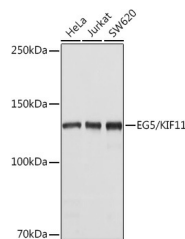
Product Type	Primary antibodies
Short Description	Rabbit polyclonal antibody anti-KIF11 (797-1056) is suitable for use in Western Blot, Immunofluorescence and Immunoprecipitation.
Applications	WB, IF, IP
Host/Source	Rabbit
Reactivity	Human

PRODUCT PROPERTIES

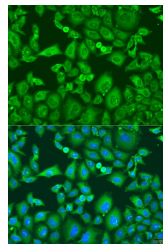
Clonality	Polyclonal
Clone ID	
Concentration	
Conjugation	Unconjugated
Purification	Affinity purification
Dilution Range	WB 1:500-1:2000 IF 1:50-1:100 IP 1:50-1:200
Formulation	PBS containing 0.02% Sodium Azide, 50% Glycerol, pH7.3.
Isotype	IgG
Storage Instruction	Store in a freezer at -20°C and avoid freeze-thaw cycles.

TARGET INFORMATION

Gene ID	3832
Gene Symbol	KIF11
Uniprot ID	KIF11_HUMAN
Immunogen	Recombinant fusion protein containing a sequence corresponding to amino acids 797-1056 of human EG5/EG5/KIF11 (NP_004514.2).
Immunogen Region	797-1056
Specificity	
Immunogen Sequence	



Western blot analysis of extracts of various cell lines using EG5/EG5/KIF11 antibody (STJ110216) at 1:1000 dilution. Secondary antibody: HRP Goat Anti-rabbit IgG (H+L) at 1:10000 dilution. Lysates/proteins: 25ug per lane. Blocking buffer: 3% nonfat dry milk in TBST. Detection: ECL Basic Kit. Exposure time: 5s.



Immunofluorescence analysis of U2OS cells using EG5/EG5/KIF11 antibody (STJ110216) at dilution of 1:100. Blue: DAPI for nuclear staining.