

Anti-CDH16 antibody (19-230) (STJ110192)

STJ110192

GENERAL INFORMATION

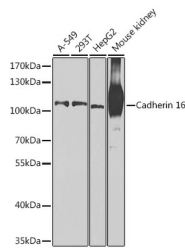
Product Type	Primary antibodies
Short Description	Rabbit polyclonal antibody anti-CDH16 (19-230) is suitable for use in Western Blot, Immunohistochemistry and Immunofluorescence.
Applications	WB, IHC, IF
Host/Source	Rabbit
Reactivity	Human, Mouse, Rat

PRODUCT PROPERTIES

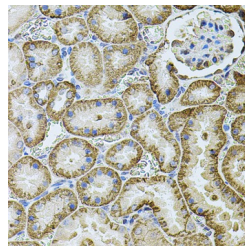
Clonality	Polyclonal
Clone ID	
Concentration	
Conjugation	Unconjugated
Purification	Affinity purification
Dilution Range	WB 1:500-1:2000 IHC 1:50-1:100 IF 1:50-1:100
Formulation	PBS containing 0.02% Sodium Azide, 50% Glycerol, pH7.3.
Isotype	IgG
Storage Instruction	Store in a freezer at -20°C and avoid freeze-thaw cycles.

TARGET INFORMATION

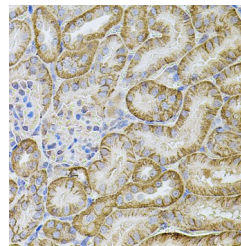
Gene ID	1014
Gene Symbol	CDH16
Uniprot ID	CAD16_HUMAN
Immunogen	Recombinant fusion protein containing a sequence corresponding to amino acids 19-230 of human Cadherin 16 (NP_004053.1).
Immunogen Region	19-230
Specificity	
Immunogen Sequence	



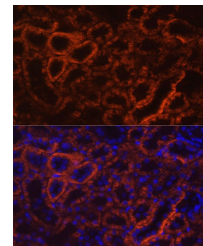
Western blot analysis of extracts of various cell lines, using Cadherin 16 antibody (STJ110192) at 1:1000 dilution. Secondary antibody: HRP Goat Anti-rabbit IgG (H+L) at 1:10000 dilution. Lysates/proteins: 25ug per lane. Blocking buffer: 3% nonfat dry milk in TBST. Detection: ECL Basic Kit. Exposure time: 90s.



Immunohistochemistry of paraffin-embedded rat kidney using Cadherin 16 antibody (STJ110192) at dilution of 1:100 (40x lens).



Immunohistochemistry of paraffin-embedded mouse kidney using Cadherin 16 antibody (STJ110192) at dilution of 1:100 (40x lens).



Immunofluorescence analysis of rat kidney using Cadherin 16 Polyclonal Antibody (STJ110192) at dilution of 1:100 (40x lens). Blue: DAPI for nuclear staining.