

Anti-CHRFAM7A antibody (1-150) (STJ110154)

STJ110154

GENERAL INFORMATION

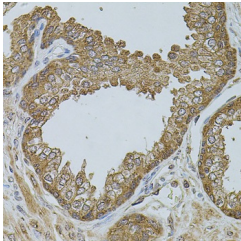
Product Type	Primary antibodies
Short Description	Rabbit polyclonal antibody anti-CHRFAM7A (1-150) is suitable for use in Western Blot and Immunohistochemistry.
Applications	WB, IHC
Host/Source	Rabbit
Reactivity	Human, Mouse, Rat

PRODUCT PROPERTIES

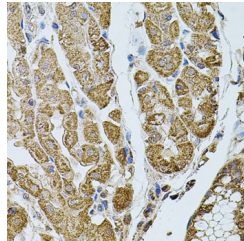
Clonality	Polyclonal
Clone ID	
Concentration	
Conjugation	Unconjugated
Purification	Affinity purification
Dilution Range	WB 1:500-1:2000 IHC 1:50-1:200
Formulation	PBS containing 0.02% Sodium Azide, 50% Glycerol, pH7.3.
Isotype	IgG
Storage Instruction	Store in a freezer at -20°C and avoid freeze-thaw cycles.

TARGET INFORMATION

Gene ID	89832
Gene Symbol	CHRFAM7A
Uniprot ID	CRFM7_HUMAN
Immunogen	Recombinant fusion protein containing a sequence corresponding to amino acids 1-150 of human CHRFAM7A (NP_647536.1).
Immunogen Region	1-150
Specificity	
Immunogen Sequence	



Immunohistochemistry of paraffin-embedded human prostate using CHRFAM7A antibody (STJ110154) at dilution of 1:100 (40x lens).



Immunohistochemistry of paraffin-embedded human stomach using CHRFAM7A antibody (STJ110154) at dilution of 1:100 (40x lens).