

Mouse Anti-Human IgG Light Chain antibody {HRP} (STJS001228)

STJS001228

GENERAL INFORMATION

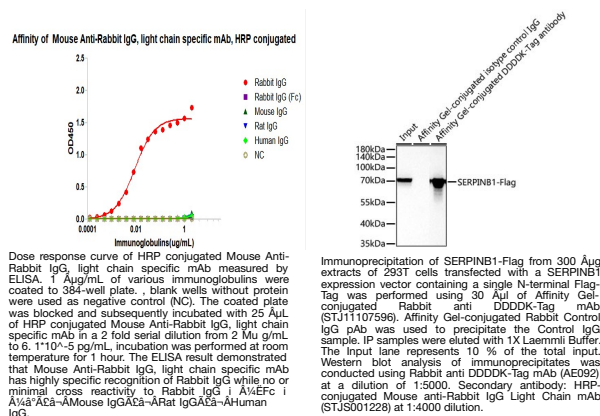
Product Type	Secondary antibodies
Short Description	
Applications	IP/ELISA
Host/Source	Mouse
Reactivity	Human

PRODUCT PROPERTIES

Clonality	Monoclonal
Clone ID	SMM
Concentration	Lot specific
Conjugation	HRP
Purification	Affinity purification
Dilution Range	IP:0.5 Mu g-4 Mu g antibody for 200 Mu g-400 Mu g extracts of whole cells ELISA: 1:5000-1:10000
Formulation	PBS with 0.09% Sodium Azide, 50% Glycerol, pH 7.3.
Isotype	IgG2bk
Storage Instruction	

TARGET INFORMATION

Gene ID	
Gene Symbol	
Uniprot ID	
Immunogen	
Immunogen Region	
Specificity	Recombinant protein of rabbit IgG.
Immunogen Sequence	



This product is suitable for in-vitro studies under the RESEARCH USE ONLY [RUO] licence. This product must not be used as for diagnostic or other medical purposes.
St John's Laboratory Ltd, Knowledge Dock Business Centre, University Way, London, E16 2RD | Tel: 0208 223 3081