

Rabbit Anti-IgG2 Fc (99-326 aa) antibody {HRP} (STJS001227)

STJS001227

GENERAL INFORMATION

Product Type	Secondary antibodies
Short Description	
Applications	ELISA
Host/Source	Rabbit
Reactivity	

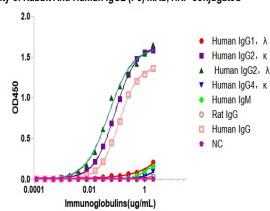
PRODUCT PROPERTIES

Clonality	Monoclonal
Clone ID	SRM
Concentration	Lot specific
Conjugation	HRP
Purification	Affinity purification
Dilution Range	ELISA: 1:5000-1:10000
Formulation	PBS with 0.09% Sodium Azide, 0.05% BSA, 50% Glycerol, pH 7.3.
Isotype	IgG
Storage Instruction	

TARGET INFORMATION

Gene ID	
Gene Symbol	IGHG2
Uniprot ID	IGHG2_HUMAN
Immunogen	
Immunogen Region	99-326 aa
Specificity	Recombinant fusion protein containing a sequence corresponding to amino acids 99-326 of human IgG2 (Fc) (P01859).
Immunogen Sequence	ERKCCVECPPCAPPVAGPS VLFPPKPKDTLMISRTPEV TCVVDVSHEDPEVQFNWYV DGVEVHNAKTKPREEQFNST FRVVSFLTQVHVDWLNKEY KCKVSNKGLPAPIEKTISKT KGPQPREPVYTLPPSREEMT KNQVSLTCLVKGFYPSDYSV EWESNGQPENNYKTPPMLD SDGSFFLYSKLTVDKSRWQQ GNVFSCSVMEALHNHYTQK SLSLSPEL

Affinity of Rabbit Anti-Human IgG2 (Fc) mAb, HRP conjugated



Dose response curve of HRP conjugated Rabbit Anti-Human IgG2 (Fc) mAb measured by ELISA. 1 µg/mL of various immunoglobulins were coated to 384-well plate. Blank wells without protein were used as negative control (NC). The coated plate was blocked and subsequently incubated with 25 µL of HRP conjugated Rabbit Anti-Human IgG2 (Fc) mAb in a 2 fold serial dilution from 2 µg/mL to 6.1 × 10⁻⁵ µg/mL. Incubation was performed at room temperature for 1 hour. The ELISA result demonstrated that Rabbit Anti-Human IgG2 (Fc) has highly specific recognition of Human IgG2Aα-Human IgG while no or minimal cross reactivity to Human IgG1Aα-Human IgG4Aα-Human IgMAα-Human Rat IgG.