

Rabbit Anti-Mouse IgG2b Fc (95-113 aa) antibody {HRP} (STJS001225)

STJS001225

GENERAL INFORMATION

Product Type	Secondary antibodies
Short Description	
Applications	ELISA
Host/Source	Rabbit
Reactivity	Mouse

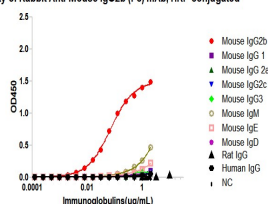
PRODUCT PROPERTIES

Clonality	Monoclonal
Clone ID	SRM
Concentration	Lot specific
Conjugation	HRP
Purification	Affinity purification
Dilution Range	ELISA: 1:5000-1:10000
Formulation	PBS with 0.09% Sodium Azide, 0.05% BSA, 50% Glycerol, pH 7.3.
Isotype	IgG
Storage Instruction	

TARGET INFORMATION

Gene ID	
Gene Symbol	
Uniprot ID	
Immunogen	
Immunogen Region	95-113 aa
Specificity	A synthetic peptide corresponding to a sequence within amino acids 95-113 of mouse IgG2b (P01867-2).
Immunogen Sequence	CGDTTGSSVTLGCLVKGYFP ESVTVTWNSGSLSSSVHTFP ALLQSGLYTMSSSVTVPSST WPSQTVTCSVAHPASSTTVDD KKLEPSGPISTINPCPPCKE

Affinity of Rabbit Anti-Mouse IgG2b (Fc) mAb, HRP conjugated



Dose response curve of HRP conjugated Rabbit Anti-Mouse IgG2b (Fc) mAb measured by ELISA. 1 μ g/mL of various immunoglobulins were coated to 384-well plate. Blank wells without protein were used as negative control (NC). The coated plate was blocked and subsequently incubated with 25 μ L of HRP conjugated Rabbit Anti-Mouse IgG2b (Fc) mAb in a 2 fold serial dilution from 2 μ g/mL to 6.1 $\times 10^{-5}$ μ g/mL. Incubation was performed at room temperature for 1 hour. The ELISA result demonstrated that Rabbit Anti-Mouse IgG2b (Fc) has highly specific recognition of Mouse IgG2b while no or minimal cross reactivity to Mouse IgG1, Mouse IgG2a, Mouse IgG2c, Mouse IgG3, Mouse IgM, Mouse IgE, Mouse IgD, Rat IgG, Human IgG, and NC.

This product is suitable for in-vitro studies under the RESEARCH USE ONLY [RUO] licence. This product must not be used as for diagnostic or other medical purposes.
St John's Laboratory Ltd, Knowledge Dock Business Centre, University Way, London, E16 2RD | Tel: 0208 223 3081