

Rabbit Anti-Human IgE antibody {HRP} (STJS001218)

STJS001218

GENERAL INFORMATION

Product Type	Secondary antibodies
Short Description	
Applications	ELISA
Host/Source	Rabbit
Reactivity	Human

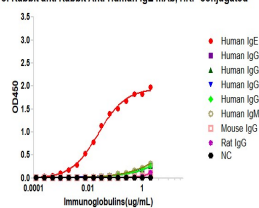
PRODUCT PROPERTIES

Clonality	Monoclonal
Clone ID	SRM
Concentration	Lot specific
Conjugation	HRP
Purification	Affinity purification
Dilution Range	ELISA: 1:5000-1:10000
Formulation	PBS with 0.05% Proclin300, 0.05% BSA, 50% Glycerol, pH 7.3.
Isotype	IgG
Storage Instruction	

TARGET INFORMATION

Gene ID	
Gene Symbol	IGHE
Uniprot ID	IGHE_HUMAN
Immunogen	
Immunogen Region	
Specificity	
Immunogen Sequence	

Affinity of Rabbit anti Human IgE mAb, HRP conjugated



Dose response curve of HRP conjugated Rabbit Anti-Human IgE (Fc) mAb measured by ELISA. 1 µg/mL of various immunoglobulins were coated to 384-well plate. Blank wells without protein were used as negative control (NC). The coated plate was blocked and subsequently incubated with 25 µL of HRP conjugated Rabbit Anti-Human IgE (Fc) mAb in a 2 fold serial dilution from 2 µg/mL to 6.13x10⁻⁵ µg/mL. Incubation was performed at room temperature for 1 hour. The ELISA result demonstrated that Rabbit Anti-Human IgE (Fc) mAb has highly specific recognition of Human IgE while no or minimal cross reactivity to Human IgG1, IgG2, IgG3, IgG4, IgM, Mouse IgG, Rat IgG, and NC.

This product is suitable for in-vitro studies under the RESEARCH USE ONLY [RUO] licence. This product must not be used as for diagnostic or other medical purposes.
St John's Laboratory Ltd, Knowledge Dock Business Centre, University Way, London, E16 2RD | Tel: 0208 223 3081