

**Goat Anti-Rabbit IgG H+L antibody {ABflo® 594} (STJS001207)**  
STJS001207

**GENERAL INFORMATION**

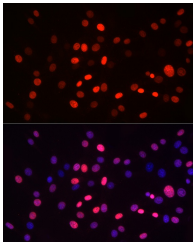
<b>Product Type</b>	Secondary antibodies
<b>Short Description</b>	
<b>Applications</b>	IF/ICC/FC
<b>Host/Source</b>	Goat
<b>Reactivity</b>	Rabbit

**PRODUCT PROPERTIES**

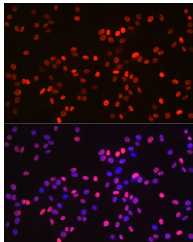
<b>Clonality</b>	Polyclonal
<b>Clone ID</b>	
<b>Concentration</b>	Lot specific
<b>Conjugation</b>	ABflo® 594
<b>Purification</b>	Affinity purification
<b>Dilution Range</b>	IF/ICC:1:50-1:200 FC:1:100-1:800
<b>Formulation</b>	PBS with 0.025% Sodium Azide, 0.75% BSA, 50% Glycerol, pH 7.3.
<b>Isotype</b>	IgG
<b>Storage Instruction</b>	

**TARGET INFORMATION**

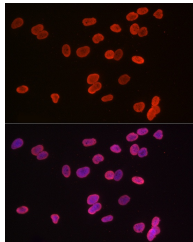
<b>Gene ID</b>	
<b>Gene Symbol</b>	
<b>Uniprot ID</b>	
<b>Immunogen</b>	
<b>Immunogen Region</b>	
<b>Specificity</b>	Rabbit IgG
<b>Immunogen Sequence</b>	



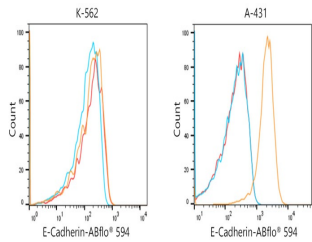
Immunofluorescence analysis of NIH/3T3 cells using MonoMethyl-Histone H3-K9 Rabbit mAb (STJ229799) (40x lens) , the secondary antibody was ABfloA® 594-conjugated AffiniPure Goat Anti antibody (STJS001207) used at dilution of 1 : 200. Secondary antibody: Cy3-conjugated Goat anti-Rabbit IgG (H+L) (STJS001166) at 1:500 dilution. Blue: DAPI for nuclear staining.



Immunofluorescence analysis of PC-12 cells using MonoMethyl-Histone H3-K9 Rabbit mAb (STJ229799) (40x lens) , the secondary antibody was ABfloA® 594-conjugated AffiniPure Goat Anti antibody (STJS001207) used at dilution of 1 : 200. Secondary antibody: Cy3-conjugated Goat anti-Rabbit IgG (H+L) (STJS001166) at 1:500 dilution. Blue: DAPI for nuclear staining.



Immunofluorescence analysis of HeLa cells using MonoMethyl-Histone H3-K9 Rabbit mAb (STJ229799) (40x lens) , the secondary antibody was ABfloA® 594-conjugated AffiniPure Goat Anti antibody (STJS001207) at dilution of 1 : 200. Secondary antibody: Cy3-conjugated Goat anti-Rabbit IgG (H+L) (STJS001166) at 1:500 dilution. Blue: DAPI for nuclear staining.



Flow cytometric analysis of Positive antibody E-Cadherin Rabbit mAb (2.5  $\mu$ g/mL) in various cells (orange) compare to Rabbit rabbit isotype control (blue) and non-staining control (Red). The secondary antibody used was ABfloA® 594-conjugated AffiniPure Goat Anti-Rabbit IgG (H+L) (STJS001207) at 1:100.

This product is suitable for in-vitro studies under the RESEARCH USE ONLY [RUO] licence. This product must not be used as for diagnostic or other medical purposes.  
St John's Laboratory Ltd, Knowledge Dock Business Centre, University Way, London, E16 2RD | Tel: 0208 223 3081