

Goat Anti-Rabbit IgG H+L antibody {ABflo® 488} (STJS001206)

STJS001206

GENERAL INFORMATION

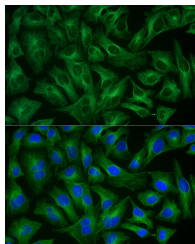
Product Type	Secondary antibodies
Short Description	
Applications	IF/ICC/FC
Host/Source	Goat
Reactivity	Rabbit

PRODUCT PROPERTIES

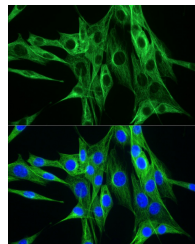
Clonality	Polyclonal
Clone ID	
Concentration	Lot specific
Conjugation	ABflo® 488
Purification	Affinity purification
Dilution Range	IF/ICC:1:50-1:200 FC:1:100-1:800
Formulation	PBS with 0.025% Sodium Azide, 0.75% BSA, 50% Glycerol, pH 7.3.
Isotype	IgG
Storage Instruction	

TARGET INFORMATION

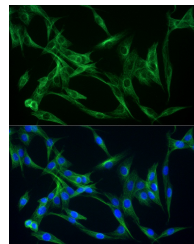
Gene ID	
Gene Symbol	
Uniprot ID	
Immunogen	
Immunogen Region	
Specificity	Rabbit IgG
Immunogen Sequence	



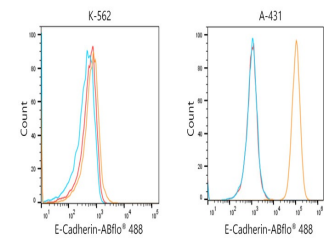
Immunofluorescence analysis of HeLa cells using Alpha-tubulin (ubiquitous) chain Rabbit mAb (STJ11103694) (40x lens), the secondary antibody was ABfloA® 488-conjugated AffiniPure Goat Anti antibody (STJS001206) used at dilution of 1 : 200. Secondary antibody: Cy3-conjugated Goat anti-Rabbit IgG (H+L) (STJS001166) at 1:500 dilution. Blue: DAPI for nuclear staining.



Immunofluorescence analysis of NIH/3T3 cells using Alpha-tubulin (ubiquitous) chain Rabbit mAb (STJ11103694) (40x lens), the secondary antibody was ABfloA® 488-conjugated AffiniPure Goat Anti antibody (STJS001206) used at dilution of 1 : 200. Secondary antibody: Cy3-conjugated Goat anti-Rabbit IgG (H+L) (STJS001166) at 1:500 dilution. Blue: DAPI for nuclear staining.



Immunofluorescence analysis of PC-12 cells using Alpha-tubulin (ubiquitous) chain Rabbit mAb (STJ11103694) (40x lens), the secondary antibody was ABfloA® 488-conjugated AffiniPure Goat Anti antibody (STJS001206) used at dilution of 1 : 200. Secondary antibody: Cy3-conjugated Goat anti-Rabbit IgG (H+L) (STJS001166) at 1:500 dilution. Blue: DAPI for nuclear staining.



Flow cytometric analysis of Positive antibody E-Cadherin Rabbit mAb (2.5 µg/mL) in various cells (orange) compare to Rabbit rabbit isotype control (blue) and non-staining control (Red). The secondary antibody used was ABfloA® 488-conjugated AffiniPure Goat Anti-Rabbit IgG (H+L) (STJS001206) at 1:100.

This product is suitable for in-vitro studies under the RESEARCH USE ONLY [RUO] licence. This product must not be used as for diagnostic or other medical purposes.
St John's Laboratory Ltd, Knowledge Dock Business Centre, University Way, London, E16 2RD | Tel: 0208 223 3081