

## Goat Anti-IgG H+L antibody {ABflo® 750} (STJS001205)

STJS001205

### GENERAL INFORMATION

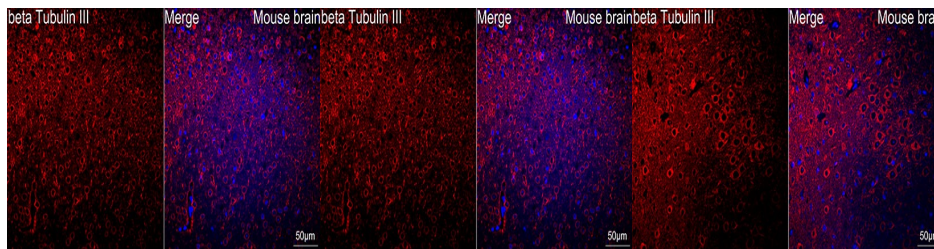
<b>Product Type</b>	Secondary antibodies
<b>Short Description</b>	
<b>Applications</b>	IF/ICC/FC
<b>Host/Source</b>	Goat
<b>Reactivity</b>	

### PRODUCT PROPERTIES

<b>Clonality</b>	Polyclonal
<b>Clone ID</b>	
<b>Concentration</b>	Lot specific
<b>Conjugation</b>	ABflo® 750
<b>Purification</b>	Affinity purification
<b>Dilution Range</b>	IF/ICC:1:500-1:1000 FC:1:500-1:2000
<b>Formulation</b>	PBS with 0.02% Sodium Azide, 50% Glycerol, pH 7.3.
<b>Isotype</b>	IgG
<b>Storage Instruction</b>	

### TARGET INFORMATION

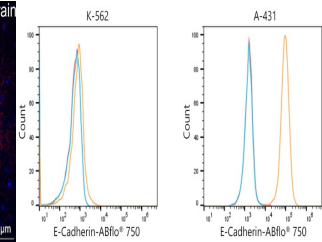
<b>Gene ID</b>	
<b>Gene Symbol</b>	
<b>Uniprot ID</b>	
<b>Immunogen</b>	
<b>Immunogen Region</b>	
<b>Specificity</b>	Rabbit IgG
<b>Immunogen Sequence</b>	



Confocal imaging of paraffin-embedded Mouse brain using Beta III-Tubulin Rabbit mAb (STJ1111133, dilution 1:200) followed by a further incubation with ABflo® 750-conjugated Goat Anti-Rabbit IgG (H+L) (STJS001205, dilution 1:500) (Red). DAPI was used for nuclear staining (Blue). Objective: 40x. Perform high pressure antigen retrieval with 0. 01M citrate buffer (pH 6. 0) prior to IF staining.

Confocal imaging of paraffin-embedded Mouse brain using AAIII-Tubulin Rabbit mAb (STJ1111133, dilution 1:200) followed by a further incubation with ABflo® 750-conjugated Goat Anti-Rabbit IgG (H+L) (STJS001205, dilution 1:500) (Red). DAPI was used for nuclear staining (Blue). Objective: 40x. Perform high pressure antigen retrieval with 0. 01M citrate buffer (pH 6. 0) prior to IF staining.

Confocal imaging of paraffin-embedded Mouse brain using AAIII-Tubulin Rabbit mAb (STJ1111133, dilution 1:200) followed by a further incubation with ABflo® 750-conjugated Goat Anti-Rabbit IgG (H+L) (STJS001205, dilution 1:1000) (Red). DAPI was used for nuclear staining (Blue). Objective: 40x. Perform high pressure antigen retrieval with 0. 01M citrate buffer (pH 6. 0) prior to IF staining.



Flow cytometric analysis of Positive antibody E-Cadherin Rabbit mAb (2. 5 Mu g/mL) in various cells (orange) compare to Rabbit rabbit isotype control (blue) and non-staining control (Red). The secondary antibody used was ABflo® 750-conjugated Goat Anti-Rabbit IgG (H+L) (STJS001205) at 1:100.

This product is suitable for in-vitro studies under the RESEARCH USE ONLY [RUO] licence. This product must not be used as for diagnostic or other medical purposes.  
St John's Laboratory Ltd, Knowledge Dock Business Centre, University Way, London, E16 2RD | Tel: 0208 223 3081