

Goat Anti-IgG H+L antibody {Unconjugated} (STJS001204)

STJS001204

GENERAL INFORMATION

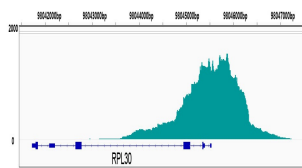
| | |
|--------------------------|----------------------|
| Product Type | Secondary antibodies |
| Short Description | |
| Applications | WB/ELISA/CUT&Tag |
| Host/Source | Goat |
| Reactivity | |

PRODUCT PROPERTIES

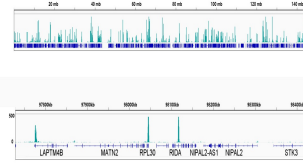
| | |
|----------------------------|---|
| Clonality | Polyclonal |
| Clone ID | |
| Concentration | Lot specific |
| Conjugation | Unconjugated |
| Purification | Affinity purification |
| Dilution Range | WB:1:1000-1:6000 ELISA:Recommended starting concentration is 1 Mu g/mL. Please optimize the concentration based on your specific assay requirements. CUT&Tag: 1:100 |
| Formulation | PBS with 0.05% Proclin300, 50% Glycerol, pH 7.3. |
| Isotype | IgG |
| Storage Instruction | |

TARGET INFORMATION

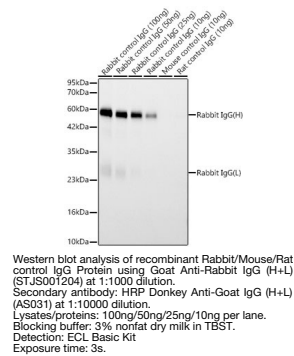
| | |
|---------------------------|------------|
| Gene ID | |
| Gene Symbol | |
| Uniprot ID | |
| Immunogen | |
| Immunogen Region | |
| Specificity | Rabbit IgG |
| Immunogen Sequence | |



CUT&Tag was performed using the CUT&Tag Assay Kit (pAG-Tn5) for Illumina (RK20265) from 10⁶ A_u K-562 cells with 1 Mu g of TriMethyl-Histone H3-K4 Rabbit mAb (STJ111286), followed by incubation with Goat Anti-Rabbit IgG (H+L) (STJS001204). The CUT&Tag results denote the enrichment pattern of TriMethyl-Histone H3-K4 around RPL30 gene.



CUT&Tag was performed using the CUT&Tag Assay Kit (pAG-Tn5) for Illumina (RK20265) from 10⁶ A_u K-562 cells with 1 Mu g of TriMethyl-Histone H3-K4 Rabbit mAb (STJ111286), followed by incubation with Goat Anti-Rabbit IgG (H+L) (STJS001204). The CUT&Tag results denote the enrichment pattern of TriMethyl-Histone H3-K4 across chromosome 8 (upper panel) and the genomic region encompassing RPL30, a representative gene enriched in TriMethyl-Histone H3-K4 (lower panel).



Western blot analysis of recombinant Rabbit/Mouse/Rat control IgG Protein using Goat Anti-Rabbit IgG (H+L) (STJS001204) at 1:1000 dilution. Secondary antibody: HRP Donkey Anti-Goat IgG (H+L) (AS031) at 1:10000 dilution. Lysates/proteins: 100ng/50ng/25ng/10ng per lane. Blocking buffer: 3% nonfat dry milk in TBST. Detection: ECL Basic Kit. Exposure time: 3s.

This product is suitable for in-vitro studies under the RESEARCH USE ONLY [RUO] licence. This product must not be used as for diagnostic or other medical purposes.
St John's Laboratory Ltd, Knowledge Dock Business Centre, University Way, London, E16 2RD | Tel: 0208 223 3081