

**Goat Anti-IgG H+L antibody {ABflo® 405} (STJS001192)**  
STJS001192

**GENERAL INFORMATION**

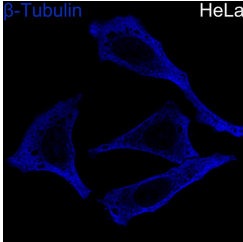
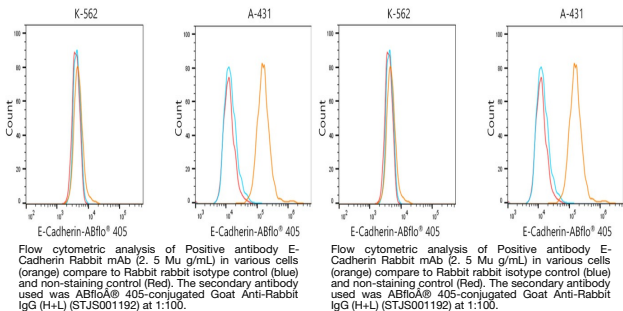
<b>Product Type</b>	Secondary antibodies
<b>Short Description</b>	
<b>Applications</b>	IF/ICC/FC
<b>Host/Source</b>	Goat
<b>Reactivity</b>	

**PRODUCT PROPERTIES**

<b>Clonality</b>	Polyclonal
<b>Clone ID</b>	
<b>Concentration</b>	Lot specific
<b>Conjugation</b>	ABflo® 405
<b>Purification</b>	Affinity purification
<b>Dilution Range</b>	IF/ICC:1:100-1:500 FC:1:500-1:2000
<b>Formulation</b>	PBS with 0.02% Sodium Azide, 50% Glycerol, pH 7.3.
<b>Isotype</b>	IgG
<b>Storage Instruction</b>	

**TARGET INFORMATION**

<b>Gene ID</b>	
<b>Gene Symbol</b>	
<b>Uniprot ID</b>	
<b>Immunogen</b>	
<b>Immunogen Region</b>	
<b>Specificity</b>	Rabbit IgG
<b>Immunogen Sequence</b>	



Confocal imaging of HeLa cells using  $\beta$ -Tubulin mAb (STJ230059, dilution 1:200) followed by a further incubation with ABflo® 405-conjugated Goat Anti-Rabbit IgG (H+L) (STJS001192, dilution 1:800) (Blue). Objective: 100x.

This product is suitable for in-vitro studies under the RESEARCH USE ONLY [RUO] licence. This product must not be used as for diagnostic or other medical purposes.  
St John's Laboratory Ltd, Knowledge Dock Business Centre, University Way, London, E16 2RD | Tel: 0208 223 3081