

## Goat Anti-IgG H+L antibody {ABflo® 488} (STJS001189)

STJS001189

### GENERAL INFORMATION

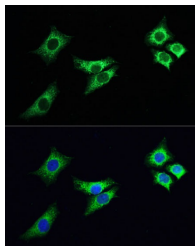
<b>Product Type</b>	Secondary antibodies
<b>Short Description</b>	
<b>Applications</b>	IF/ICC/FC
<b>Host/Source</b>	Goat
<b>Reactivity</b>	

### PRODUCT PROPERTIES

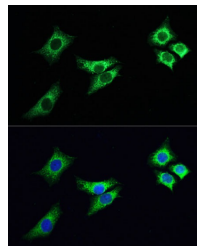
<b>Clonality</b>	Polyclonal
<b>Clone ID</b>	
<b>Concentration</b>	Lot specific
<b>Conjugation</b>	ABflo® 488
<b>Purification</b>	Affinity purification
<b>Dilution Range</b>	IF/ICC:1:100-1:500 FC:1:100-1:500
<b>Formulation</b>	PBS with 0.02% Sodium Azide, 50% Glycerol, pH 7.3.
<b>Isotype</b>	IgG
<b>Storage Instruction</b>	

### TARGET INFORMATION

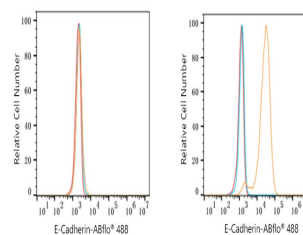
<b>Gene ID</b>	
<b>Gene Symbol</b>	
<b>Uniprot ID</b>	
<b>Immunogen</b>	
<b>Immunogen Region</b>	
<b>Specificity</b>	Rabbit IgG
<b>Immunogen Sequence</b>	



Immunofluorescence analysis of HeLa cells, using ACO2 antibody (STJ22487) as the primary antibody at dilution of 1:100. The cells were incubated with the primary antibody overnight at 4°C. Secondary antibody: ABfloA® 488-conjugated Goat Anti-Rabbit IgG (H+L) (STJS001189) at 1:200 dilution. Blue: DAPI for nuclear staining.



Immunofluorescence analysis of HeLa cells, using ACO2 antibody (STJ22487) as the primary antibody at dilution of 1:100. The cells were incubated with the primary antibody overnight at 4°C. Secondary antibody: ABfloA® 488-conjugated Goat Anti-Rabbit IgG (H+L) (STJS001189) at 1:200 dilution. Blue: DAPI for nuclear staining.



Flow cytometry: 1X10<sup>6</sup> K-562 cells (negative control, left) and A-431 cells (right) were surface-stained with Purified Rabbit anti-Human E-Cadherin mAb (5 µg/ml) (Test, orange line) or secondary antibody only (blue line). Non-fluorescently stained K-562 and A-431 cells were used as blank control (red line). ABfloA® 488-conjugated Goat Anti-Rabbit IgG (H+L) (STJS001189, 1:500) was used as a secondary antibody.