

Donkey Anti-Rabbit IgG H+L antibody {FITC} (STJS001188)

STJS001188

GENERAL INFORMATION

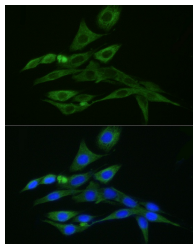
Product Type	Secondary antibodies
Short Description	
Applications	IF/ICC/FC
Host/Source	Donkey
Reactivity	Rabbit

PRODUCT PROPERTIES

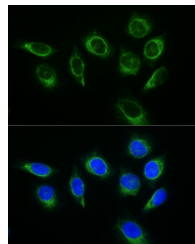
Clonality	Polyclonal
Clone ID	
Concentration	Lot specific
Conjugation	FITC
Purification	Affinity purification
Dilution Range	IF/ICC:1:50-1:200 FC:1:50-1:200
Formulation	PBS with 0.025% Sodium Azide, 0.75% BSA, 50% Glycerol, pH 7.3.
Isotype	IgG
Storage Instruction	

TARGET INFORMATION

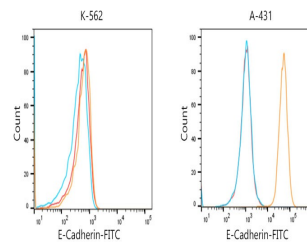
Gene ID	
Gene Symbol	
Uniprot ID	
Immunogen	
Immunogen Region	
Specificity	Rabbit IgG
Immunogen Sequence	



Immunofluorescence analysis of PC-12 cells using Vimentin Rabbit mAb (STJ1161657) at a dilution of 1:100 (40x lens). Secondary antibody: FITC Donkey Anti-Rabbit IgG (H+L) (STJS001188) at dilution of 1:200 (40x lens). Blue: DAPI for nuclear staining.



Immunofluorescence analysis of HeLa cells using Vimentin Rabbit mAb (STJ1161657) at a dilution of 1:100 (40x lens). Secondary antibody: FITC Donkey Anti-Rabbit IgG (H+L) (STJS001188) at dilution of 1:200 (40x lens). Blue: DAPI for nuclear staining.



Flow cytometric analysis of Positive antibody E-Cadherin Rabbit mAb (2.5 μ g/mL) in various cells (orange) compare to Rabbit rabbit isotype control (blue) and non-staining control (Red). The secondary antibody used was FITC Donkey Anti-Rabbit IgG (H+L) (STJS001188) at 1:100.