

Donkey Anti-Rabbit IgG H+L antibody {ABflo® 488} (STJS001183)

STJS001183

GENERAL INFORMATION

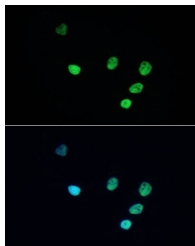
Product Type	Secondary antibodies
Short Description	
Applications	IF/ICC/FC
Host/Source	Donkey
Reactivity	Rabbit

PRODUCT PROPERTIES

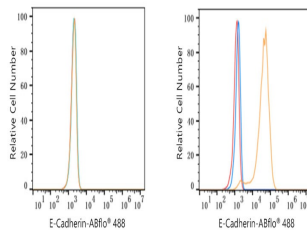
Clonality	Polyclonal
Clone ID	
Concentration	Lot specific
Conjugation	ABflo® 488
Purification	Affinity purification
Dilution Range	IF/ICC:1:100-1:800 FC:1:100-1:800
Formulation	PBS with 0.025% Sodium Azide, 0.75% BSA, 50% Glycerol, pH 7.3.
Isotype	IgG
Storage Instruction	

TARGET INFORMATION

Gene ID	
Gene Symbol	
Uniprot ID	
Immunogen	
Immunogen Region	
Specificity	Rabbit IgG
Immunogen Sequence	



Immunofluorescence analysis of HeLa cells, using PARP1 antibody (STJ29827) as the primary antibody at dilution of 1:100. The cells were incubated with the primary antibody overnight at 4°C. Secondary antibody: ABflo® 488-conjugated Donkey Anti-Rabbit IgG (H+L) (STJS001183) at 1:100 dilution. Blue: DAPI for nuclear staining.



Flow cytometry: 1X10⁶ K-562 cells (negative control, left) and A-431 cells (right) were surface-stained with Purified Rabbit anti-Human E-Cadherin mAb (5 µg/ml), orange line) or secondary antibody only (blue line). Non-fluorescently stained K-562 and A-431 cells were used as blank control (red line). ABflo® 488-conjugated Donkey Anti-Rabbit IgG (H+L) (STJS001183, 1:800) was used as a secondary antibody.

This product is suitable for in-vitro studies under the RESEARCH USE ONLY [RUO] licence. This product must not be used as for diagnostic or other medical purposes.
St John's Laboratory Ltd, Knowledge Dock Business Centre, University Way, London, E16 2RD | Tel: 0208 223 3081