

Donkey Anti-Mouse IgG H+L antibody {HRP} (STJS001182)
STJS001182

GENERAL INFORMATION

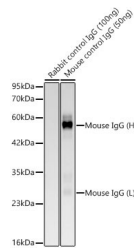
Product Type	Secondary antibodies
Short Description	
Applications	WB/IHC-P
Host/Source	Donkey
Reactivity	Mouse

PRODUCT PROPERTIES

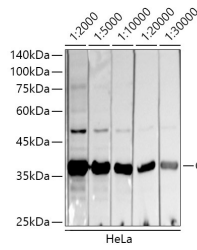
Clonality	Polyclonal
Clone ID	
Concentration	Lot specific
Conjugation	HRP
Purification	Affinity purification
Dilution Range	WB:1:10000-1:30000 IHC-P:1:500-1:1000
Formulation	PBS with 0.75% BSA, 50% Glycerol, pH 7.3.
Isotype	IgG
Storage Instruction	

TARGET INFORMATION

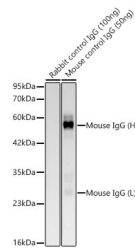
Gene ID	
Gene Symbol	
Uniprot ID	
Immunogen	
Immunogen Region	
Specificity	Mouse IgG
Immunogen Sequence	



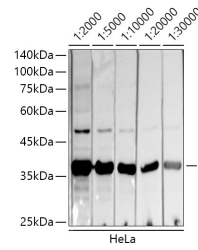
Western blot analysis of recombinant Mouse control IgG Protein using HRP Donkey Anti-Mouse IgG (H+L) (STJS001182) at 1:10000 dilution.
Secondary antibody:HRP Donkey Anti-Mouse IgG (H+L) (STJS001182) at 1:10000 dilution.
Lysates/proteins: 100ng/50ng per lane.
Blocking buffer: 3% nonfat dry milk in TBST.
Detection: ECL Basic Kit
Exposure time: 20s.



Western blot analysis of lysates from HeLa cells, using GAPDH antibody as the primary antibody.
Secondary antibody:HRP Donkey Anti-Mouse IgG (H+L) (STJS001182) at 1:10000 dilution.
Lysates/proteins: 25A Mu g per lane.
Blocking buffer: 3% nonfat dry milk in TBST.
Detection: ECL Basic Kit
Exposure time: 20s.



Western blot analysis of recombinant Mouse control IgG Protein using HRP Donkey Anti-Mouse IgG (H+L) (STJS001182) at 1:10000 dilution.
Secondary antibody:HRP Donkey Anti-Mouse IgG (H+L) (STJS001182) at 1:10000 dilution.
Lysates/proteins: 100ng/50ng per lane.
Blocking buffer: 3% nonfat dry milk in TBST.
Detection: ECL Basic Kit
Exposure time: 20s.



Western blot analysis of lysates from HeLa cells, using GAPDH antibody as the primary antibody.
Secondary antibody:HRP Donkey Anti-Mouse IgG (H+L) (STJS001182) at 1:10000 dilution.
Lysates/proteins: 25A Mu g per lane.
Blocking buffer: 3% nonfat dry milk in TBST.
Detection: ECL Basic Kit
Exposure time: 20s.

This product is suitable for in-vitro studies under the RESEARCH USE ONLY [RUO] licence. This product must not be used as for diagnostic or other medical purposes.
St John's Laboratory Ltd, Knowledge Dock Business Centre, University Way, London, E16 2RD | Tel: 0208 223 3081