

## Human Lactate Dehydrogenase A/LDHA protein (Recombinant) (C-His) (STJP003082)

STJP003082

### GENERAL INFORMATION

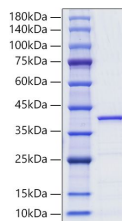
<b>Product Type</b>	Proteins
<b>Short Description</b>	
<b>Host/Source</b>	HEK293 cells

### PRODUCT PROPERTIES

<b>Concentration</b>	
<b>Formulation</b>	Supplied as a 0.22 $\mu$ g/ml filtered solution in 20mM Tris, 250mM NaCl, 10% Glycerol, pH 8.0.
<b>Purification</b>	
<b>Dilution Range</b>	> 95% by SDS-PAGE.
<b>Storage Instruction</b>	Store at -20°C for up to 1 year from the date of receipt, and avoid repeat freeze-thaw cycles.

### TARGET INFORMATION

<b>Gene ID</b>	3939
<b>Gene Symbol</b>	LDHA
<b>Uniprot ID</b>	LDHA_HUMAN
<b>Immunogen Sequence</b>	



Recombinant Human Lactate Dehydrogenase A/LDHA Protein was determined by SDS-PAGE with Coomassie Blue, showing a band at 35-45 kDa.

This product is suitable for in-vitro studies under the RESEARCH USE ONLY [RUO] licence. This product must not be used as for diagnostic or other medical purposes.  
St John's Laboratory Ltd, Knowledge Dock Business Centre, University Way, London, E16 2RD | Tel: 0208 223 3081