

## Human Lp-PLA2/PLA2G7 protein (Recombinant) (C-6\*His) (STJP003058)

STJP003058

### GENERAL INFORMATION

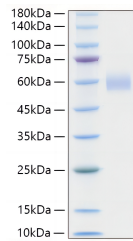
<b>Product Type</b>	Proteins
<b>Short Description</b>	
<b>Host/Source</b>	HEK293 cells

### PRODUCT PROPERTIES

<b>Concentration</b>	
<b>Formulation</b>	Lyophilised from a 0.22 Mu m filtered solution of 50mM NaAc, 150mM NaCl, 10% Glycerol (pH 5.0)
<b>Purification</b>	
<b>Dilution Range</b>	> 97% by SDS-PAGE.
<b>Storage Instruction</b>	Store at -20°C for up to 1 year from the date of receipt, and avoid repeat freeze-thaw cycles.

### TARGET INFORMATION

<b>Gene ID</b>	7941
<b>Gene Symbol</b>	PLA2G7
<b>Uniprot ID</b>	PAFA_HUMAN
<b>Immunogen Sequence</b>	



Recombinant Human Lp-PLA2/PLA2G7 Protein was determined by SDS-PAGE with Coomassie Blue, showing a band at 50-55 kDa.

This product is suitable for in-vitro studies under the RESEARCH USE ONLY [RUO] licence. This product must not be used as for diagnostic or other medical purposes.  
St John's Laboratory Ltd, Knowledge Dock Business Centre, University Way, London, E16 2RD | Tel: 0208 223 3081