

Human CCL25/TECK protein (Recombinant) (C-His) (STJP003009)

STJP003009

GENERAL INFORMATION

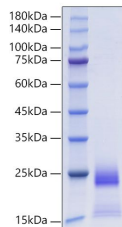
| | |
|--------------------------|--------------|
| Product Type | Proteins |
| Short Description | |
| Host/Source | HEK293 cells |

PRODUCT PROPERTIES

| | |
|----------------------------|--|
| Concentration | |
| Formulation | Lyophilised from a 0.22 Mu m filtered solution of PBS, pH 7.4. |
| Purification | |
| Dilution Range | > 90% by SDS-PAGE. |
| Storage Instruction | Store at -20°C for up to 1 year from the date of receipt, and avoid repeat freeze-thaw cycles. |

TARGET INFORMATION

| | |
|---------------------------|-------------|
| Gene ID | 6370 |
| Gene Symbol | CCL25 |
| Uniprot ID | CCL25_HUMAN |
| Immunogen Sequence | |



Recombinant Human CCL25/TECK Protein was determined by SDS-PAGE with Coomassie Blue, showing a band at 20-25 kDa.

This product is suitable for in-vitro studies under the RESEARCH USE ONLY [RUO] licence. This product must not be used as for diagnostic or other medical purposes.
St John's Laboratory Ltd, Knowledge Dock Business Centre, University Way, London, E16 2RD | Tel: 0208 223 3081