

## Mouse CXCL12/SDF-1 protein (Recombinant) (C-6His) (STJP002954)

STJP002954

### GENERAL INFORMATION

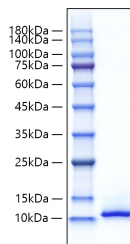
<b>Product Type</b>	Proteins
<b>Short Description</b>	
<b>Host/Source</b>	E.coli

### PRODUCT PROPERTIES

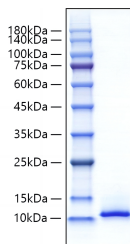
<b>Concentration</b>	
<b>Formulation</b>	Lyophilised from a 0.22 M filtered solution of PBS, pH 7.4.
<b>Purification</b>	
<b>Dilution Range</b>	
<b>Storage Instruction</b>	Store at -20°C for up to 1 year from the date of receipt, and avoid repeat freeze-thaw cycles.

### TARGET INFORMATION

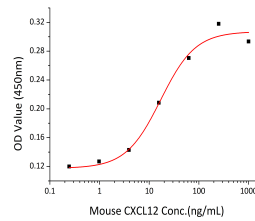
<b>Gene ID</b>	20315
<b>Gene Symbol</b>	Cxcl12
<b>Uniprot ID</b>	SDF1_MOUSE
<b>Immunogen Sequence</b>	



Recombinant Mouse CXCL12/SDF-1 Protein was determined by SDS-PAGE with Coomassie Blue, showing a band at 10-15 kD.



Recombinant Mouse CXCL12/SDF-1 Protein was determined by SDS-PAGE with Coomassie Blue, showing a band at 10-15 kD.



Recombinant Mouse CXCL12/SDF-1 chemottract MOLT4 cells. The ED<sub>50</sub> for this effect is 8.49-33.94 ng/mL, corresponding to a specific activity of 2.95A × 10<sup>4</sup> - 1.18A × 10<sup>5</sup> units/mg.

This product is suitable for in-vitro studies under the RESEARCH USE ONLY [RUO] licence. This product must not be used as for diagnostic or other medical purposes.  
St John's Laboratory Ltd, Knowledge Dock Business Centre, University Way, London, E16 2RD | Tel: 0208 223 3081