

## Human CCL23/Ck beta 8-1 protein (Recombinant) (No tag) (STJP002903)

STJP002903

### GENERAL INFORMATION

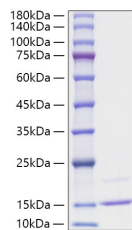
<b>Product Type</b>	Proteins
<b>Short Description</b>	
<b>Host/Source</b>	E.coli

### PRODUCT PROPERTIES

<b>Concentration</b>	
<b>Formulation</b>	Lyophilised from a 0.2 M µm filtered solution of 20 mM PB, 250 mM NaCl, pH 7.2.
<b>Purification</b>	
<b>Dilution Range</b>	> 95% by SDS-PAGE.
<b>Storage Instruction</b>	Store at -20°C for up to 1 year from the date of receipt, and avoid repeat freeze-thaw cycles.

### TARGET INFORMATION

<b>Gene ID</b>	6368
<b>Gene Symbol</b>	CCL23
<b>Uniprot ID</b>	CCL23_HUMAN
<b>Immunogen Sequence</b>	



Recombinant protein Human CCL23/Ck beta 8-1 was determined by SDS-PAGE under reducing conditions with Coomassie Blue, showing a band at 15-25 kDa.

This product is suitable for in-vitro studies under the RESEARCH USE ONLY [RUO] licence. This product must not be used as for diagnostic or other medical purposes.  
St John's Laboratory Ltd, Knowledge Dock Business Centre, University Way, London, E16 2RD | Tel: 0208 223 3081