

Mouse CCL2/MCP-1 protein (Recombinant) (No tag) (STJP002834)
STJP002834

GENERAL INFORMATION

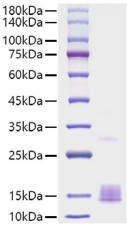
Product Type Proteins
Short Description
Host/Source Pichia

PRODUCT PROPERTIES

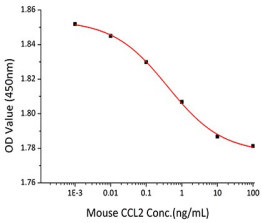
Concentration
Formulation Lyophilised from a 0.22 M filtered solution of PBS, pH 7.4.
Purification
Dilution Range > 95% by SDS-PAGE.
Storage Instruction Store at -20°C for up to 1 year from the date of receipt, and avoid repeat freeze-thaw cycles.

TARGET INFORMATION

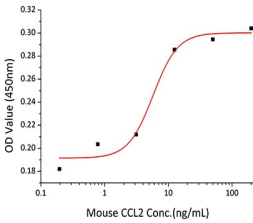
Gene ID 20296
Gene Symbol Ccl2
Uniprot ID CCL2_MOUSE
Immunogen Sequence



Recombinant Mouse CCL2/MCP-1 Protein was determined by SDS-PAGE with Coomassie Blue, showing bands at 14-18 kDa.



Recombinant Mouse CCL2 inhibit the proliferation of HUVEC (Human Umbilical Vein Endothelial Cells). The ED₅₀ for this effect is 0.20-0.50 ng/mL.



Recombinant Mouse CCL2 chemoattract THP-1 cells. The ED₅₀ for this effect is typically 2.87-11.48 ng/mL.

This product is suitable for in-vitro studies under the RESEARCH USE ONLY [RUO] licence. This product must not be used as for diagnostic or other medical purposes.
St John's Laboratory Ltd, Knowledge Dock Business Centre, University Way, London, E16 2RD | Tel: 0208 223 3081