

Mouse CCL2/MCP-1 protein (Recombinant) (C-His) (STJP002817)

STJP002817

GENERAL INFORMATION

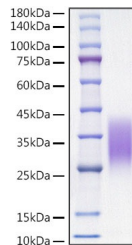
Product Type	Proteins
Short Description	
Host/Source	HEK293 cells

PRODUCT PROPERTIES

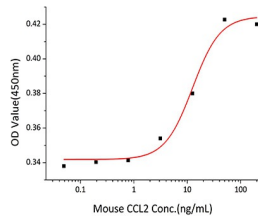
Concentration	
Formulation	Lyophilised from a 0.22 M filtered solution of PBS, pH 7.4.
Purification	
Dilution Range	> 95% by SDS-PAGE.
Storage Instruction	Store at -20°C for up to 1 year from the date of receipt, and avoid repeat freeze-thaw cycles.

TARGET INFORMATION

Gene ID	20296
Gene Symbol	Ccl2
Uniprot ID	CCL2_MOUSE
Immunogen Sequence	



Recombinant Mouse CCL2/MCP-1 Protein was determined by SDS-PAGE with Coomassie Blue, showing a band at 25-37kDa.



Recombinant Mouse CCL2 chemoattract THP-1 cells. The ED₅₀ for this effect is typically 6.2-25.0 ng/mL.

This product is suitable for in-vitro studies under the RESEARCH USE ONLY [RUO] licence. This product must not be used as for diagnostic or other medical purposes.
St John's Laboratory Ltd, Knowledge Dock Business Centre, University Way, London, E16 2RD | Tel: 0208 223 3081