

Human Ephrin-A1/EFNA1 protein (Recombinant) (C-hFc) (STJP002760)

STJP002760

GENERAL INFORMATION

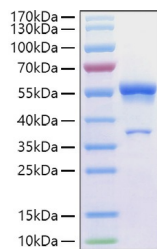
Product Type	Proteins
Short Description	
Host/Source	HEK293 cells

PRODUCT PROPERTIES

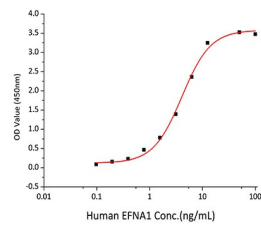
Concentration	
Formulation	Lyophilised from a 0.22 Mu m filtered solution of PBS, pH 7.4.
Purification	
Dilution Range	> 90% by SDS-PAGE.
Storage Instruction	Store at -20°C for up to 1 year from the date of receipt, and avoid repeat freeze-thaw cycles.

TARGET INFORMATION

Gene ID	1942
Gene Symbol	EFNA1
Uniprot ID	EFNA1_HUMAN
Immunogen Sequence	



Active Recombinant Human Ephrin-A1/EFNA1 Protein was determined by SDS-PAGE with Coomassie Blue, showing a band at 55-60kDa.



Immobilized Human EphA2 at 1 Mu g/mL (100 Mu L/well) can bind Human EFNA1 with a linear range of 0.098-4.084 ng/mL.

This product is suitable for in-vitro studies under the RESEARCH USE ONLY [RUO] licence. This product must not be used as for diagnostic or other medical purposes.
St John's Laboratory Ltd, Knowledge Dock Business Centre, University Way, London, E16 2RD | Tel: 0208 223 3081