

Human CD3 epsilon/CD3E protein (Recombinant) (C-His) (STJP002725)

STJP002725

GENERAL INFORMATION

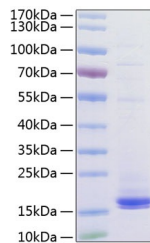
Product Type Proteins
Short Description
Host/Source HEK293 cells

PRODUCT PROPERTIES

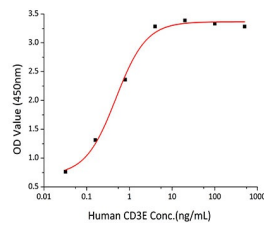
Concentration
Formulation Lyophilised from a 0.22 M filtered solution of PBS, pH 7.4.
Purification
Dilution Range > 90% by SDS-PAGE.
Storage Instruction Store at -20°C for up to 1 year from the date of receipt, and avoid repeat freeze-thaw cycles.

TARGET INFORMATION

Gene ID 916
Gene Symbol CD3E
Uniprot ID CD3E_HUMAN
Immunogen Sequence



Active Recombinant Human CD3 epsilon/CD3E Protein was determined by SDS-PAGE with Coomassie Blue, showing a band at 18-20 kDa.



Immobilized Anti-CD3 epsilon/CD3E Antibody at 1:3000 (100 M U/well) can bind recombinant Human CD3E, the EC₅₀ of Human CD3E is 0.48 ng/mL.

This product is suitable for in-vitro studies under the RESEARCH USE ONLY [RUO] licence. This product must not be used as for diagnostic or other medical purposes.
 St John's Laboratory Ltd, Knowledge Dock Business Centre, University Way, London, E16 2RD | Tel: 0208 223 3081