

Mouse c-Kit ligand/SCF/KITLG protein (Recombinant) (C-His) (STJP002693)
STJP002693

GENERAL INFORMATION

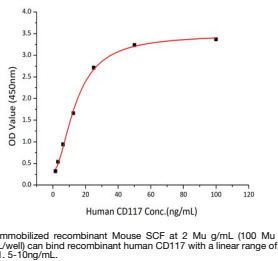
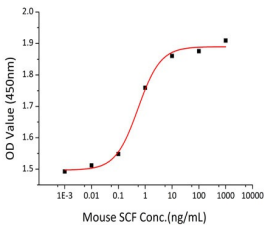
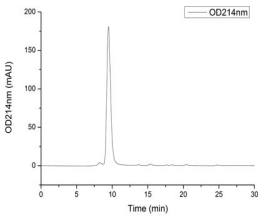
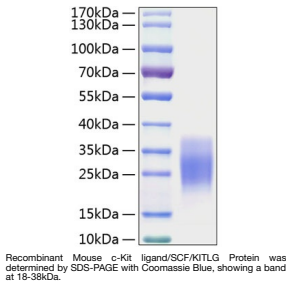
Product Type	Proteins
Short Description	
Host/Source	HEK293 cells

PRODUCT PROPERTIES

Concentration	
Formulation	Lyophilised from a 0.22 Mu m filtered solution of PBS, pH 7.4.
Purification	
Dilution Range	> 95% by SDS-PAGE.
Storage Instruction	Store at -20°C for up to 1 year from the date of receipt, and avoid repeat freeze-thaw cycles.

TARGET INFORMATION

Gene ID	17311
Gene Symbol	Kitlg
Uniprot ID	SCF_MOUSE
Immunogen Sequence	



This product is suitable for in-vitro studies under the RESEARCH USE ONLY [RUO] licence. This product must not be used as for diagnostic or other medical purposes.
St John's Laboratory Ltd, Knowledge Dock Business Centre, University Way, London, E16 2RD | Tel: 0208 223 3081