

Human Kininogen-1/KNG1 protein (Recombinant) (C-His) (STJP002685)

STJP002685

GENERAL INFORMATION

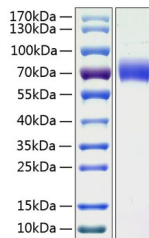
Product Type Proteins
Short Description
Host/Source HEK293 cells

PRODUCT PROPERTIES

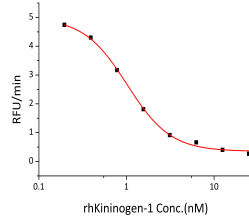
Concentration
Formulation Lyophilised from a 0.22 µm filtered solution of PBS, pH 7.4.
Purification
Dilution Range > 97% by SDS-PAGE.
Storage Instruction Store at -20°C for up to 1 year from the date of receipt, and avoid repeat freeze-thaw cycles.

TARGET INFORMATION

Gene ID 3827
Gene Symbol KNG1
Uniprot ID KNG1_HUMAN
Immunogen Sequence



Recombinant Human Kininogen-1/KNG1 Protein was determined by SDS-PAGE with Coomassie Blue, showing a band at 70 kDa.



Recombinant human KNG1 inhibits papain cleavage of a fluorogenic peptide substrate Z-FFR-AMC (Catalog#ES009). The IC50 value approximately is 1nM.

This product is suitable for in-vitro studies under the RESEARCH USE ONLY [RUO] licence. This product must not be used as for diagnostic or other medical purposes.
 St John's Laboratory Ltd, Knowledge Dock Business Centre, University Way, London, E16 2RD | Tel: 0208 223 3081