

## Human C-Reactive/CRP protein (Recombinant) (C-His) (STJP002682)

STJP002682

### GENERAL INFORMATION

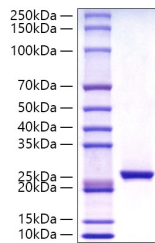
**Product Type** Proteins  
**Short Description**  
**Host/Source** HEK293 cells

### PRODUCT PROPERTIES

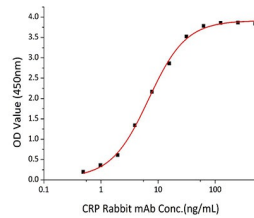
**Concentration**  
**Formulation** Lyophilised from a 0.22 Mu m filtered solution of PBS, pH 7.4.  
**Purification**  
**Dilution Range** > 95% by SDS-PAGE.  
**Storage Instruction** Store at -20°C for up to 1 year from the date of receipt, and avoid repeat freeze-thaw cycles.

### TARGET INFORMATION

**Gene ID** 1401  
**Gene Symbol** CRP  
**Uniprot ID** CRP\_HUMAN  
**Immunogen Sequence**



Recombinant Human C-Reactive Protein/CRP Protein was determined by SDS-PAGE with Coomassie Blue, showing a band at 25-30 kDa.



Immobilized Human C-Reactive Protein at 2 Mu g/mL (100 Mu L/well) can bind CRP Rabbit mAb with a linear range of 0.488-8.81 ng/mL.

This product is suitable for in-vitro studies under the RESEARCH USE ONLY [RUO] licence. This product must not be used as for diagnostic or other medical purposes.  
 St John's Laboratory Ltd, Knowledge Dock Business Centre, University Way, London, E16 2RD | Tel: 0208 223 3081