

**Human CSF1R/M-CSF R/CD115 protein (Recombinant) (C-His) (STJP002606)**  
STJP002606

**GENERAL INFORMATION**

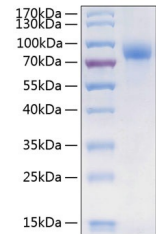
<b>Product Type</b>	Proteins
<b>Short Description</b>	
<b>Host/Source</b>	HEK293 cells

**PRODUCT PROPERTIES**

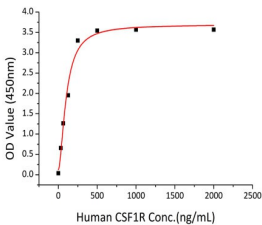
<b>Concentration</b>	
<b>Formulation</b>	Lyophilised from a 0.22 Mu m filtered solution of PBS, pH 7.4.
<b>Purification</b>	
<b>Dilution Range</b>	> 95% by SDS-PAGE.
<b>Storage Instruction</b>	Store at -20°C for up to 1 year from the date of receipt, and avoid repeat freeze-thaw cycles.

**TARGET INFORMATION**

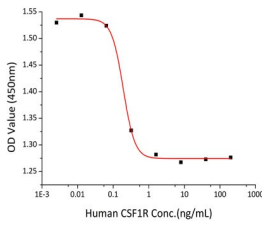
<b>Gene ID</b>	1436
<b>Gene Symbol</b>	CSF1R
<b>Uniprot ID</b>	CSF1R_HUMAN
<b>Immunogen Sequence</b>	



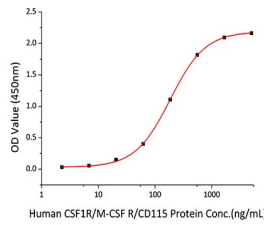
Recombinant Human CSF1R/M-CSF R/CD115 Protein was determined by SDS-PAGE with Coomassie Blue, showing a band at 70-100 kDa.



Immobilized Recombinant Human M-CSF at 2 Mu g/mL (100 Mu L/well) can bind Recombinant Human CSF1R with a linear range of 50-200 ng/mL.



Recombinant Human CSF1R inhibits the GCSF-induced proliferation of M-NFS-60 mouse myelogenous leukemia lymphoblast cells. The ED<sub>50</sub>-sub-50-sub- for this effect is typically 0.095-0.38 ng/mL.



Immobilized Human CSF-1/M-CSF (Cat. STJP002736) at 2 Mu g/mL (100 Mu L/well) can bind Human CSF1R with a linear range of 2-185 ng/mL.

This product is suitable for in-vitro studies under the RESEARCH USE ONLY [RUO] licence. This product must not be used as for diagnostic or other medical purposes.  
St John's Laboratory Ltd, Knowledge Dock Business Centre, University Way, London, E16 2RD | Tel: 0208 223 3081