

Human Prolactin receptor/PRL-R protein (Recombinant) (C-His) (STJP002577)

STJP002577

GENERAL INFORMATION

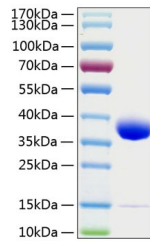
| | |
|--------------------------|--------------|
| Product Type | Proteins |
| Short Description | |
| Host/Source | HEK293 cells |

PRODUCT PROPERTIES

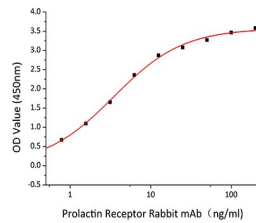
| | |
|----------------------------|--|
| Concentration | |
| Formulation | Lyophilised from a 0.22 Mu m filtered solution of PBS, pH 7.4. |
| Purification | |
| Dilution Range | > 97% by SDS-PAGE. |
| Storage Instruction | Store at -20°C for up to 1 year from the date of receipt, and avoid repeat freeze-thaw cycles. |

TARGET INFORMATION

| | |
|---------------------------|------------|
| Gene ID | 5618 |
| Gene Symbol | PRLR |
| Uniprot ID | PRLR_HUMAN |
| Immunogen Sequence | |



Recombinant Human Prolactin receptor/PRL-R Protein was determined by SDS-PAGE with Coomassie Blue, showing a band at 67 kDa.



Immobilized Human PRLR/Proactin Receptor at 1 Mu g/mL (100 Mu L/well) can bind Prolactin Receptor Rabbit mAb with a linear range of 0.67-3.45 ng/mL.

This product is suitable for in-vitro studies under the RESEARCH USE ONLY [RUO] licence. This product must not be used as for diagnostic or other medical purposes.
St John's Laboratory Ltd, Knowledge Dock Business Centre, University Way, London, E16 2RD | Tel: 0208 223 3081