

Human Leukemia inhibitory factor/LIF protein (Recombinant) (C-His) (STJP002559)
STJP002559

GENERAL INFORMATION

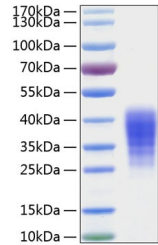
Product Type Proteins
Short Description
Host/Source HEK293 cells

PRODUCT PROPERTIES

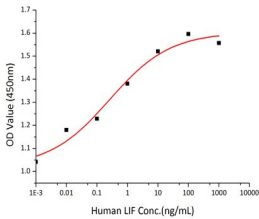
Concentration
Formulation Lyophilised from a 0.22 Mu m filtered solution of PBS, pH 7.4.
Purification
Dilution Range > 95% by SDS-PAGE.
Storage Instruction Store at -20°C for up to 1 year from the date of receipt, and avoid repeat freeze-thaw cycles.

TARGET INFORMATION

Gene ID 3976
Gene Symbol LIF
Uniprot ID LIF_HUMAN
Immunogen Sequence



Recombinant Human Leukemia inhibitory factor/LIF Protein was determined by SDS-PAGE with Coomassie Blue, showing a band at 33-45kDa.



Recombinant Human LIF stimulates cell proliferation of the TF-1 human erythroleukemic cells. The ED₅₀ for this effect is typically 0.1-0.3 ng/mL, corresponding to a specific activity of 3.33A 10⁶ units/mg.

This product is suitable for in-vitro studies under the RESEARCH USE ONLY [RUO] licence. This product must not be used as for diagnostic or other medical purposes.
St John's Laboratory Ltd, Knowledge Dock Business Centre, University Way, London, E16 2RD | Tel: 0208 223 3081