

## Human EphA2/ECK protein (Recombinant) (C-His) (STJP002555)

STJP002555

### GENERAL INFORMATION

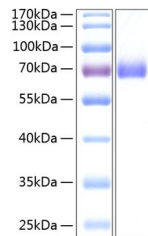
<b>Product Type</b>	Proteins
<b>Short Description</b>	
<b>Host/Source</b>	HEK293 cells

### PRODUCT PROPERTIES

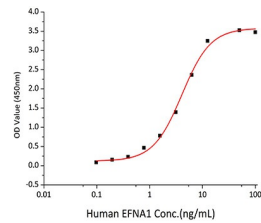
<b>Concentration</b>	
<b>Formulation</b>	Lyophilised from a 0.22 Mu m filtered solution of PBS, pH 7.4.
<b>Purification</b>	
<b>Dilution Range</b>	> 97% by SDS-PAGE.
<b>Storage Instruction</b>	Store at -20°C for up to 1 year from the date of receipt, and avoid repeat freeze-thaw cycles.

### TARGET INFORMATION

<b>Gene ID</b>	1969
<b>Gene Symbol</b>	EPHA2
<b>Uniprot ID</b>	EPHA2_HUMAN
<b>Immunogen Sequence</b>	



Recombinant Human EphA2/ECK Protein was determined by SDS-PAGE with Coomassie Blue, showing a band at 70 kDa.



Immobilized Human EphA2 at 1 Mu g/mL (100 Mu L/well) can bind Human EFNA1 with a linear range of 0.098-4.084 ng/mL.

This product is suitable for in-vitro studies under the RESEARCH USE ONLY [RUO] licence. This product must not be used as for diagnostic or other medical purposes.  
St John's Laboratory Ltd, Knowledge Dock Business Centre, University Way, London, E16 2RD | Tel: 0208 223 3081