

Human Siglec-10 protein (Recombinant) (C-hFc) (STJP002214)
STJP002214

GENERAL INFORMATION

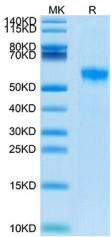
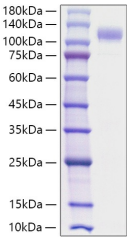
Product Type	Proteins
Short Description	
Host/Source	HEK293 cells

PRODUCT PROPERTIES

Concentration	
Formulation	Lyophilised from a 0.22 Mu m filtered solution of PBS, pH 7.4.
Purification	
Dilution Range	> 95% by Tris-Bis PAGE
Storage Instruction	Store at -20°C for up to 1 year from the date of receipt, and avoid repeat freeze-thaw cycles.

TARGET INFORMATION

Gene ID	89790
Gene Symbol	SIGLEC10
Uniprot ID	SIG10_HUMAN
Immunogen Sequence	



This product is suitable for in-vitro studies under the RESEARCH USE ONLY [RUO] licence. This product must not be used as for diagnostic or other medical purposes.
St John's Laboratory Ltd, Knowledge Dock Business Centre, University Way, London, E16 2RD | Tel: 0208 223 3081