

**Human Klotho beta/KLB protein (Recombinant) (C-His) (STJP002079)**  
STJP002079

**GENERAL INFORMATION**

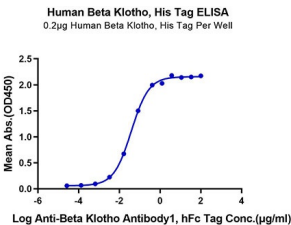
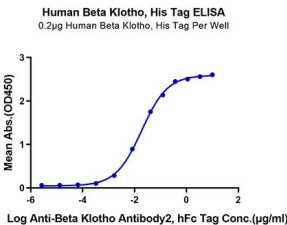
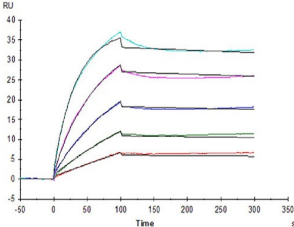
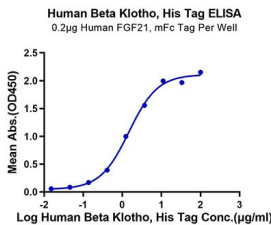
**Product Type** Proteins  
**Short Description**  
**Host/Source** HEK293 cells

**PRODUCT PROPERTIES**

**Concentration**  
**Formulation** Lyophilised from a 0.22 Mu m filtered solution of PBS, pH 7.4.  
**Purification**  
**Dilution Range** > 95% by SDS-PAGE.  
**Storage Instruction** Store at -20°C for up to 1 year from the date of receipt, and avoid repeat freeze-thaw cycles.

**TARGET INFORMATION**

**Gene ID** 152831  
**Gene Symbol** KLB  
**Uniprot ID** KLOTB\_HUMAN  
**Immunogen Sequence**



This product is suitable for in-vitro studies under the RESEARCH USE ONLY [RUO] licence. This product must not be used as for diagnostic or other medical purposes.  
St John's Laboratory Ltd, Knowledge Dock Business Centre, University Way, London, E16 2RD | Tel: 0208 223 3081