

Rat c-Kit ligand/SCF/KITLG protein (Recombinant) (C-His) (STJP001962)

STJP001962

GENERAL INFORMATION

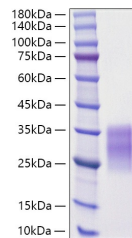
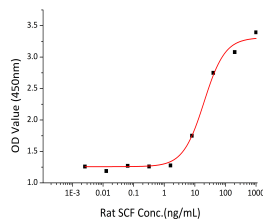
Product Type Proteins
Short Description
Host/Source HEK293 cells

PRODUCT PROPERTIES

Concentration
Formulation Lyophilised from a 0.22 Mu m filtered solution of PBS, pH 7.4.
Purification
Dilution Range > 97% by SDS-PAGE.
Storage Instruction Store at -20°C for up to 1 year from the date of receipt, and avoid repeat freeze-thaw cycles.

TARGET INFORMATION

Gene ID 60427
Gene Symbol Kitlg
Uniprot ID SCF_RAT
Immunogen Sequence



This product is suitable for in-vitro studies under the RESEARCH USE ONLY [RUO] licence. This product must not be used as for diagnostic or other medical purposes.
 St John's Laboratory Ltd, Knowledge Dock Business Centre, University Way, London, E16 2RD | Tel: 0208 223 3081