

Human Mesothelin/MSLN protein (Recombinant) (C-hFc&His) (STJP001231)

STJP001231

GENERAL INFORMATION

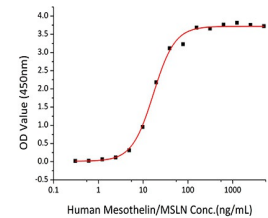
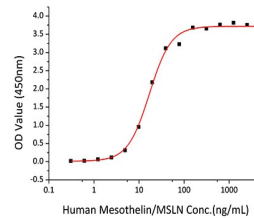
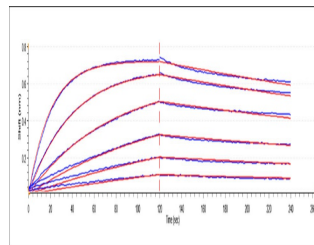
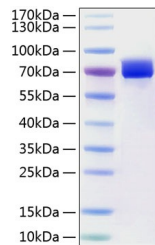
Product Type	Proteins
Short Description	
Host/Source	HEK293 cells

PRODUCT PROPERTIES

Concentration	
Formulation	Lyophilised from a 0.22 Mu m filtered solution of PBS, pH 7.4.
Purification	
Dilution Range	> 97% by SDS-PAGE.
Storage Instruction	Store at -20°C for up to 1 year from the date of receipt, and avoid repeat freeze-thaw cycles.

TARGET INFORMATION

Gene ID	10232
Gene Symbol	MSLN
Uniprot ID	MSLN_HUMAN
Immunogen Sequence	



This product is suitable for in-vitro studies under the RESEARCH USE ONLY [RUO] licence. This product must not be used as for diagnostic or other medical purposes.
St John's Laboratory Ltd, Knowledge Dock Business Centre, University Way, London, E16 2RD | Tel: 0208 223 3081