

Human WIF-1 (Q166K) protein (Recombinant) (C-His) (STJP000963)

STJP000963

GENERAL INFORMATION

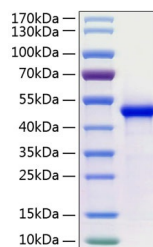
Product Type	Proteins
Short Description	
Host/Source	HEK293 cells

PRODUCT PROPERTIES

Concentration	
Formulation	Lyophilised from a 0.22 M µm filtered solution of 20mM HAc-NaAc, 150mM NaCl, 0.5% CHAPS, pH 6.0.
Purification	
Dilution Range	> 97% by SDS-PAGE.
Storage Instruction	Store at -20°C for up to 1 year from the date of receipt, and avoid repeat freeze-thaw cycles.

TARGET INFORMATION

Gene ID	11197
Gene Symbol	WIF1
Uniprot ID	WIF1_HUMAN
Immunogen Sequence	



This product is suitable for in-vitro studies under the RESEARCH USE ONLY [RUO] licence. This product must not be used as for diagnostic or other medical purposes.
St John's Laboratory Ltd, Knowledge Dock Business Centre, University Way, London, E16 2RD | Tel: 0208 223 3081