

Human Receptor-interacting protein kinase 1 (RIPK1) (Receptor-interacting protein kinase 1 (RIPK1)) Sandwich ELISA Kit (STJE0019657)

STJE0019657

GENERAL INFORMATION

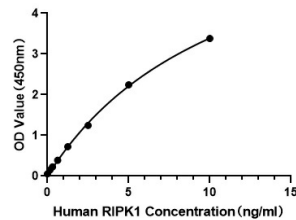
Product Type	Kits
Short Description	
Applications	ELISA
Reactivity	Human

PRODUCT PROPERTIES

Detection	Colorimetric
Sensitivity	0.059 ng/mL
Detection Limit	0156-10 ng/mL
Assay Time	4 hours
Storage	Unopened kits can be stored at 2-8°C for 1 year, and opened products must be used within 1 month.
Instruction	
Note	STRICTLY FOR FURTHER SCIENTIFIC RESEARCH USE ONLY (RUO). MUST NOT TO BE USED IN DIAGNOSTIC OR THERAPEUTIC APPLICATIONS.

TARGET INFORMATION

Sample Types	cell lysates, tissue homogenates and other biological fluids
Gene Symbol	
Uniprot ID	



This product is suitable for in-vitro studies under the RESEARCH USE ONLY [RUO] licence. This product must not be used as for diagnostic or other medical purposes.
St John's Laboratory Ltd, Knowledge Dock Business Centre, University Way, London, E16 2RD | Tel: 0208 223 3081