

## Human Prolactin (Prolactin) Sandwich ELISA Kit Kit (STJE0019644)

STJE0019644

### GENERAL INFORMATION

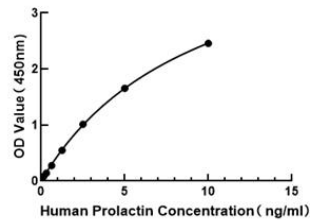
<b>Product Type</b>	Kits
<b>Short Description</b>	
<b>Applications</b>	ELISA
<b>Reactivity</b>	Human

### PRODUCT PROPERTIES

<b>Detection</b>	Colorimetric
<b>Sensitivity</b>	0.124 ng/mL
<b>Detection Limit</b>	0156-10 ng/mL
<b>Assay Time</b>	4 hours
<b>Storage</b>	Unopened kits can be stored at 2-8°C for 1 year, and opened products must be used within 1 month.
<b>Instruction Note</b>	STRICTLY FOR FURTHER SCIENTIFIC RESEARCH USE ONLY (RUO). MUST NOT TO BE USED IN DIAGNOSTIC OR THERAPEUTIC APPLICATIONS.

### TARGET INFORMATION

<b>Sample Types</b>	serum, plasma and cell culture supernates
<b>Gene Symbol</b>	
<b>Uniprot ID</b>	



---

This product is suitable for in-vitro studies under the RESEARCH USE ONLY [RUO] licence. This product must not be used as for diagnostic or other medical purposes.  
St John's Laboratory Ltd, Knowledge Dock Business Centre, University Way, London, E16 2RD | Tel: 0208 223 3081