

Mouse XRCC6 (X-Ray Repair Cross Complementing 6) Sandwich ELISA Kit Ready-To-Use Kit (STJE0019523)

STJE0019523

GENERAL INFORMATION

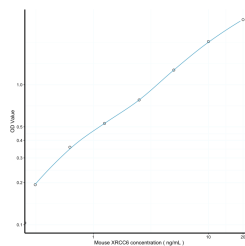
Product Type	Kits
Short Description	This XRCC6 Sandwich ELISA Kit, Ready-To-Use is an in-vitro enzyme-linked immunosorbent assay for the measurement of samples in mouse tissue homogenates or other biological fluids..
Applications	ELISA
Reactivity	Mouse

PRODUCT PROPERTIES

Detection	0.312-20ng/mL
Sensitivity	0.107ng/mL
Detection Limit	0.312-20ng/mL
Assay Time	3 hrs
Storage	The whole kit may be stored at -20°C for up to 12 months from receipt. An unopened kit may be stored in the fridge at 2-8°C for up to 6 months. Once opened store individual kit contents according to components table provided with the kit.
Note	STRICTLY FOR FURTHER SCIENTIFIC RESEARCH USE ONLY (RUO). MUST NOT TO BE USED IN DIAGNOSTIC OR THERAPEUTIC APPLICATIONS.

TARGET INFORMATION

Sample Types	tissue homogenates or other biological fluids.
Gene	Xrcc6
Symbol	
Uniprot ID	XRCC6_MOUSE



This product is suitable for in-vitro studies under the RESEARCH USE ONLY [RUO] licence. This product must not be used as for diagnostic or other medical purposes.
St John's Laboratory Ltd, Knowledge Dock Business Centre, University Way, London, E16 2RD | Tel: 0208 223 3081