

## Rat SLC30A7 (Solute Carrier Family 30 Member 7) Sandwich ELISA Kit Ready-To-Use Kit (STJE0018596)

STJE0018596

### GENERAL INFORMATION

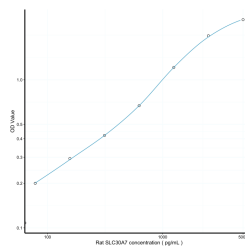
<b>Product Type</b>	Kits
<b>Short Description</b>	This SLC30A7 Sandwich ELISA Kit, Ready-To-Use is an in-vitro enzyme-linked immunosorbent assay for the measurement of samples in rat tissue homogenates or other biological fluids..
<b>Applications</b>	ELISA
<b>Reactivity</b>	Rat

### PRODUCT PROPERTIES

<b>Detection</b>	78.1-5000pg/mL
<b>Sensitivity</b>	29.3pg/mL
<b>Detection Limit</b>	78.1-5000pg/mL
<b>Assay Time</b>	3 hrs
<b>Storage</b>	The whole kit may be stored at -20°C for up to 12 months from receipt. An unopened kit may be stored in the fridge at 2-8°C for up to 6 months. Once opened store individual kit contents according to components table provided with the kit.
<b>Note</b>	STRICTLY FOR FURTHER SCIENTIFIC RESEARCH USE ONLY (RUO). MUST NOT TO BE USED IN DIAGNOSTIC OR THERAPEUTIC APPLICATIONS.

### TARGET INFORMATION

<b>Sample Types</b>	tissue homogenates or other biological fluids.
<b>Gene</b>	<a href="#">Slc30a7</a>
<b>Symbol</b>	
<b>Uniprot ID</b>	<a href="#">ZNT7_RAT</a>



This product is suitable for in-vitro studies under the RESEARCH USE ONLY [RUO] licence. This product must not be used as for diagnostic or other medical purposes.  
St John's Laboratory Ltd, Knowledge Dock Business Centre, University Way, London, E16 2RD | Tel: 0208 223 3081