

## Human PTMa (Prothymosin Alpha) Sandwich ELISA Kit Ready-To-Use Kit (STJE0018139)

STJE0018139

### GENERAL INFORMATION

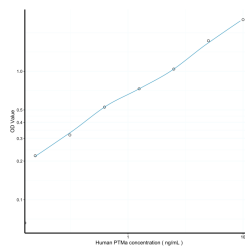
<b>Product Type</b>	Kits
<b>Short Description</b>	This PTMa Sandwich ELISA Kit, Ready-To-Use is an in-vitro enzyme-linked immunosorbent assay for the measurement of samples in human serum, plasma, tissue homogenates, cell lysates, cell culture supernates or other biological fluids..
<b>Applications</b>	ELISA
<b>Reactivity</b>	Human

### PRODUCT PROPERTIES

<b>Detection</b>	0.156-10ng/mL
<b>Sensitivity</b>	0.059ng/mL
<b>Detection Limit</b>	0.156-10ng/mL
<b>Assay Time</b>	3 hrs
<b>Storage</b>	The whole kit may be stored at -20°C for up to 12 months from receipt. An unopened kit may be stored in the fridge at 2-8°C for up to 6 months. Once opened store individual kit contents according to components table provided with the kit.
<b>Instruction</b>	
<b>Note</b>	STRICTLY FOR FURTHER SCIENTIFIC RESEARCH USE ONLY (RUO). MUST NOT TO BE USED IN DIAGNOSTIC OR THERAPEUTIC APPLICATIONS.

### TARGET INFORMATION

<b>Sample Types</b>	serum, plasma, tissue homogenates, cell lysates, cell culture supernates or other biological fluids.
<b>Gene</b>	PTMA
<b>Symbol</b>	
<b>Uniprot ID</b>	PTMA_HUMAN



This product is suitable for in-vitro studies under the RESEARCH USE ONLY [RUO] licence. This product must not be used as for diagnostic or other medical purposes.  
 St John's Laboratory Ltd, Knowledge Dock Business Centre, University Way, London, E16 2RD | Tel: 0208 223 3081