

Human PCT (Procalcitonin) Sandwich ELISA Kit Ready-To-Use Kit (STJE0017704)

STJE0017704

GENERAL INFORMATION

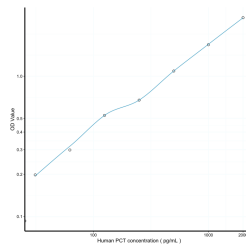
Product Type	Kits
Short Description	This PCT Sandwich ELISA Kit, Ready-To-Use is an in-vitro enzyme-linked immunosorbent assay for the measurement of samples in human serum, plasma, tissue homogenates, cell lysates, cell culture supernates or other biological fluids..
Applications	ELISA
Reactivity	Human

PRODUCT PROPERTIES

Detection Limit	31.2-2000pg/mL
Sensitivity	12.6pg/mL
Detection Limit	31.2-2000pg/mL
Assay Time	3 hrs
Storage	The whole kit may be stored at -20°C for up to 12 months from receipt. An unopened kit may be stored in the fridge at 2-8°C for up to 6 months. Once opened store individual kit contents according to components table provided with the kit.
Instruction	
Note	STRICTLY FOR FURTHER SCIENTIFIC RESEARCH USE ONLY (RUO). MUST NOT TO BE USED IN DIAGNOSTIC OR THERAPEUTIC APPLICATIONS.

TARGET INFORMATION

Sample Types	serum, plasma, tissue homogenates, cell lysates, cell culture supernates or other biological fluids.
Gene Symbol	
Uniprot ID	



This product is suitable for in-vitro studies under the RESEARCH USE ONLY [RUO] licence. This product must not be used as for diagnostic or other medical purposes.
 St John's Laboratory Ltd, Knowledge Dock Business Centre, University Way, London, E16 2RD | Tel: 0208 223 3081