

## Porcine MMP2 (Matrix Metalloproteinase 2) Sandwich ELISA Kit Ready-To-Use Kit (STJE0017053)

STJE0017053

### GENERAL INFORMATION

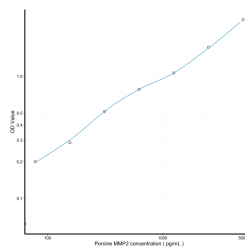
|                          |  |
|--------------------------|--|
| <b>Product Type</b>      | Kits   |
| <b>Short Description</b> | This MMP2 Sandwich ELISA Kit, Ready-To-Use is an in-vitro enzyme-linked immunosorbent assay for the measurement of samples in porcine serum, plasma, tissue homogenates, cell lysates or other biological fluids.. |
| <b>Applications</b>      | ELISA  |
| <b>Reactivity</b>        | Porcine  |

### PRODUCT PROPERTIES

|                        |  |
|------------------------|--|
| <b>Detection</b>       | 78.1-5000pg/mL   |
| <b>Sensitivity</b>     | 33pg/mL  |
| <b>Detection Limit</b> | 78.1-5000pg/mL   |
| <b>Assay Time</b>      | 3 hrs  |
| <b>Storage</b>         | The whole kit may be stored at -20°C for up to 12 months from receipt. An unopened kit may be stored in the fridge at 2-8°C for up to 6 months. Once opened store individual kit contents according to components table provided with the kit. |
| <b>Note</b>            | STRICTLY FOR FURTHER SCIENTIFIC RESEARCH USE ONLY (RUO). MUST NOT TO BE USED IN DIAGNOSTIC OR THERAPEUTIC APPLICATIONS.  |

### TARGET INFORMATION

|                     |   |
|---------------------|---|
| <b>Sample Types</b> | serum, plasma, tissue homogenates, cell lysates or other biological fluids. |
| <b>Gene Symbol</b>  |   |
| <b>Uniprot ID</b>   |   |



This product is suitable for in-vitro studies under the RESEARCH USE ONLY [RUO] licence. This product must not be used as for diagnostic or other medical purposes.  
St John's Laboratory Ltd, Knowledge Dock Business Centre, University Way, London, E16 2RD | Tel: 0208 223 3081