

Human MEP1b (Meprin A Beta) Sandwich ELISA Kit Ready-To-Use Kit (STJE0016944)

STJE0016944

GENERAL INFORMATION

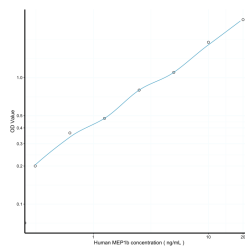
| | |
|--------------------------|--|
| Product Type | Kits |
| Short Description | This MEP1b Sandwich ELISA Kit, Ready-To-Use is an in-vitro enzyme-linked immunosorbent assay for the measurement of samples in human tissue homogenates, cell lysates or other biological fluids.. |
| Applications | ELISA |
| Reactivity | Human |

PRODUCT PROPERTIES

| | |
|------------------------|--|
| Detection | 0.312-20ng/mL |
| Sensitivity | 0.117ng/mL |
| Detection Limit | 0.312-20ng/mL |
| Assay Time | 3 hrs |
| Storage | The whole kit may be stored at -20°C for up to 12 months from receipt. An unopened kit may be stored in the fridge at 2-8°C for up to 6 months. Once opened store individual kit contents according to components table provided with the kit. |
| Instruction | |
| Note | STRICTLY FOR FURTHER SCIENTIFIC RESEARCH USE ONLY (RUO). MUST NOT TO BE USED IN DIAGNOSTIC OR THERAPEUTIC APPLICATIONS. |

TARGET INFORMATION

| | |
|---------------------|--|
| Sample Types | tissue homogenates, cell lysates or other biological fluids. |
| Gene | MEP1B |
| Symbol | |
| Uniprot ID | MEP1B_HUMAN |



This product is suitable for in-vitro studies under the RESEARCH USE ONLY [RUO] licence. This product must not be used as for diagnostic or other medical purposes.
 St John's Laboratory Ltd, Knowledge Dock Business Centre, University Way, London, E16 2RD | Tel: 0208 223 3081